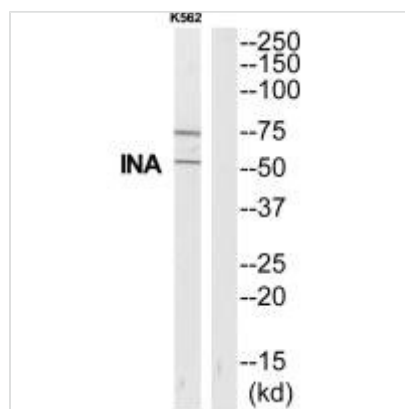




INA Antibody

Product Code	CSB-PA206018
Storage	Upon receipt, store at -20°C or -80°C. Avoid repeated freeze.
Uniprot No.	Q16352
Immunogen	Synthesized peptide derived from Internal of Human INA.
Raised In	Rabbit
Species Reactivity	Human,Mouse,Rat
Specificity	The antibody detects endogenous levels of total INA protein.
Tested Applications	ELISA,WB;WB:1:500-1:3000
Form	Rabbit IgG in phosphate buffered saline (without Mg ²⁺ and Ca ²⁺), pH 7.4, 150mM NaCl, 0.02% sodium azide and 50% glycerol.
Purification Method	The antibody was affinity-purified from rabbit antiserum by affinity-chromatography using epitope-specific immunogen.
Clonality	Polyclonal
Alias	66 kDa neurofilament protein; AINX; Alpha-internexin; Alpha-Inx; FLJ18662
Product Type	Polyclonal Antibody
Immunogen Species	Homo sapiens (Human)
Target Names	INA

Image



Western blot analysis of extracts from K562 cells, using INA antibody.

Usage For Research Use Only. Not for use in diagnostic or therapeutic procedures.