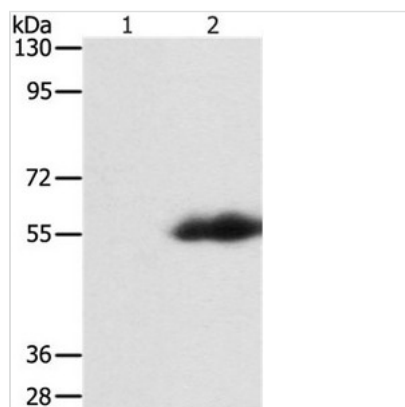




# FLAG tag Antibody

<b>Product Code</b>	CSB-PA087360
<b>Storage</b>	Upon receipt, store at -20°C or -80°C. Avoid repeated freeze.
<b>Immunogen</b>	Synthetic peptide: DYKDDDDK conjugated to KLH
<b>Raised In</b>	Rabbit
<b>Specificity</b>	The antibody detects transfected proteins containing FLAG tag.
<b>Tested Applications</b>	ELISA, WB; WB: 1:500-1:3000
<b>Form</b>	Rabbit IgG in pH7.3 PBS, 0.05% NaN <sub>3</sub> , 50% Glycerol.
<b>Purification Method</b>	Antigen Affinity Purified
<b>Clonality</b>	Polyclonal
<b>Alias</b>	DDDDK epitope tag; DYKDDDDK epitope tag
<b>Product Type</b>	Polyclonal Antibody

## Image



Gel: 8%SDS-PAGE Lysate: 40µg 293T cells transfected with DYKDDDDK-tagged protein vector  
 Primary antibody: 1/500 dilution  
 Secondary antibody dilution: 1/8000 Exposure time: 30 seconds