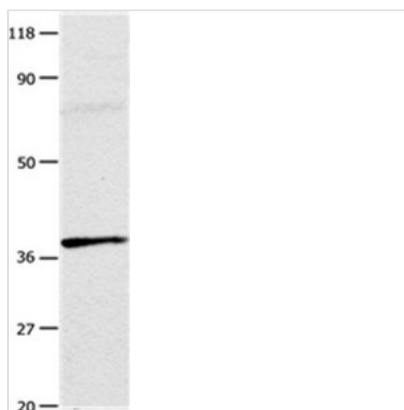




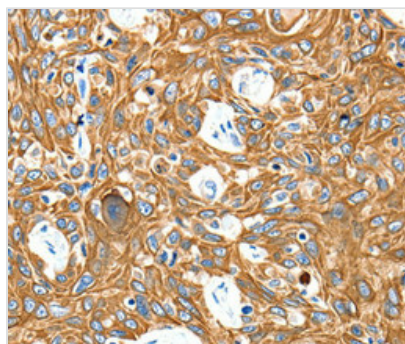
# ADORA3 Antibody

<b>Product Code</b>	CSB-PA010455
<b>Storage</b>	Upon receipt, store at -20°C or -80°C. Avoid repeated freeze.
<b>Uniprot No.</b>	P33765
<b>Immunogen</b>	Fusion protein corresponding to a region derived from internal residues of Human Adenosine receptor A3
<b>Raised In</b>	Rabbit
<b>Species Reactivity</b>	Human,Mouse,Rat
<b>Specificity</b>	The antibody detects endogenous levels of total ADORA3 protein.
<b>Tested Applications</b>	ELISA,WB,IHC;WB:1:500-1:3000,IHC:1:50-1:100
<b>Form</b>	Rabbit IgG in pH7.3 PBS, 0.05% NaN <sub>3</sub> , 50% Glycerol.
<b>Purification Method</b>	Antigen Affinity Purified
<b>Clonality</b>	Polyclonal
<b>Alias</b>	A3AR; AD026
<b>Product Type</b>	Polyclonal Antibody
<b>Immunogen Species</b>	Homo sapiens (Human)
<b>Target Names</b>	ADORA3

## Image



Gel: 10%SDS-PAGE Lysates (from left to right):  
 Mouse testis tissue Amount of lysate: 20µg per  
 lane Primary antibody: 1/100 dilution Secondary  
 antibody dilution: 1/8000 Exposure time: 1  
 minute



Immunohistochemical analysis of paraffin-  
 embedded Human esophagus cancer tissue  
 using at dilution 1/20.



---

**Usage**

For Research Use Only. Not for use in diagnostic or therapeutic procedures.