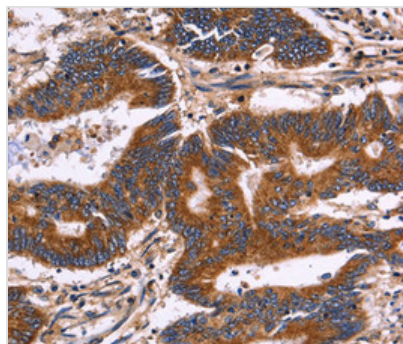




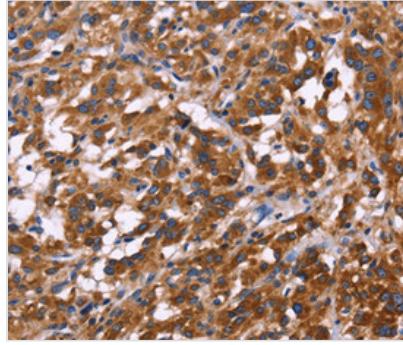
# KIR2DL3 Antibody

<b>Product Code</b>	CSB-PA913411
<b>Storage</b>	Upon receipt, store at -20°C or -80°C. Avoid repeated freeze.
<b>Uniprot No.</b>	P43628
<b>Immunogen</b>	Fusion protein corresponding to a region derived from internal residues of Human killer cell immunoglobulin-like receptor, two domains, long cytoplasmic tail, 3/1/4/ short cytoplasmic tail, 4
<b>Raised In</b>	Rabbit
<b>Species Reactivity</b>	Human,Mouse,Rat
<b>Specificity</b>	The antibody detects endogenous levels of total KIR2DL3/1/4/S4 protein.
<b>Tested Applications</b>	ELISA,IHC;IHC:1:50-1:100
<b>Form</b>	Rabbit IgG in pH7.3 PBS, 0.05% NaN <sub>3</sub> , 50% Glycerol.
<b>Purification Method</b>	Antigen Affinity Purified
<b>Clonality</b>	Polyclonal
<b>Alias</b>	p58; NKAT; GL183; NKAT2; CD158b; NKAT2A; NKAT2B; CD158B2; KIR-K7b; KIR-K7c; KIRCL23; KIR-023GB/NKAT; NKAT1; p58.1; CD158A; KIR221; KIR-K64/ G9P; CD158D; KIR103; KIR103AS/ KKA3; KIR1D; NKAT8; CD158I; KIR412
<b>Product Type</b>	Polyclonal Antibody
<b>Immunogen Species</b>	Homo sapiens (Human)
<b>Target Names</b>	KIR2DL3

## Image



Immunohistochemical analysis of paraffin-embedded Human colon cancer tissue using at dilution 1/30.



Immunohistochemical analysis of paraffin-embedded Human thyroid cancer tissue using at dilution 1/30.

---

**Usage**

For Research Use Only. Not for use in diagnostic or therapeutic procedures.