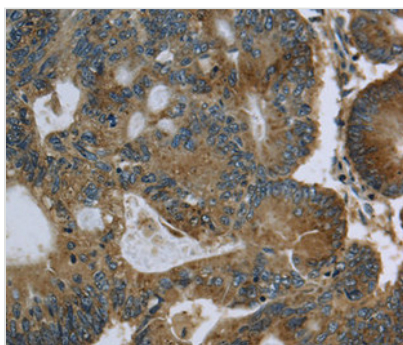




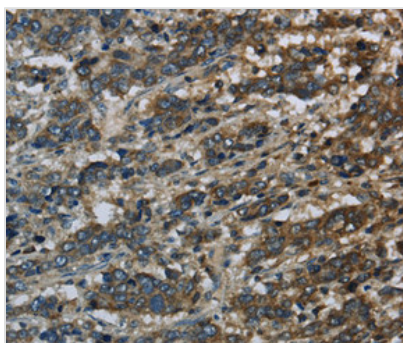
# GK Antibody

|                            |  |
|----------------------------|--|
| <b>Product Code</b>        | CSB-PA115735   |
| <b>Storage</b>             | Upon receipt, store at -20°C or -80°C. Avoid repeated freeze.                                    |
| <b>Uniprot No.</b>         | P32189   |
| <b>Immunogen</b>           | Fusion protein corresponding to a region derived from internal residues of Human glycerol kinase |
| <b>Raised In</b>           | Rabbit   |
| <b>Species Reactivity</b>  | Human,Mouse,Rat  |
| <b>Specificity</b>         | The antibody detects endogenous levels of total GK protein.                                      |
| <b>Tested Applications</b> | ELISA,IHC;IHC:1:50-1:100   |
| <b>Form</b>                | Rabbit IgG in pH7.3 PBS, 0.05% NaN <sub>3</sub> , 50% Glycerol.                                  |
| <b>Purification Method</b> | Antigen Affinity Purified  |
| <b>Clonality</b>           | Polyclonal   |
| <b>Alias</b>               | GK1; GKD   |
| <b>Product Type</b>        | Polyclonal Antibody  |
| <b>Immunogen Species</b>   | Homo sapiens (Human)   |
| <b>Target Names</b>        | GK   |

## Image



Immunohistochemical analysis of paraffin-embedded Human colon cancer tissue using at dilution 1/60.



Immunohistochemical analysis of paraffin-embedded Human liver cancer tissue using at dilution 1/60.

## Usage

For Research Use Only. Not for use in diagnostic or therapeutic procedures.