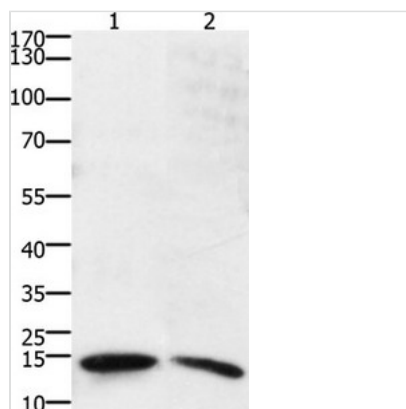




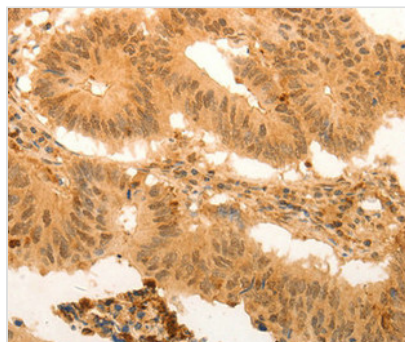
SUMO2 Antibody

| | |
|----------------------------|---|
| Product Code | CSB-PA099258 |
| Storage | Upon receipt, store at -20°C or -80°C. Avoid repeated freeze. |
| Uniprot No. | P61956 |
| Immunogen | Synthetic peptide corresponding to a region derived from internal residues of Human SMT3 suppressor of mif two 3 homolog 2/3/4 (<i>S. cerevisiae</i>) |
| Raised In | Rabbit |
| Species Reactivity | Human,Mouse,Rat |
| Specificity | The antibody detects endogenous levels of total SUMO2/SUMO3/SUMO4 protein. |
| Tested Applications | ELISA,WB,IHC;WB:1:500-1:3000,IHC:1:50-1:100 |
| Form | Rabbit IgG in pH7.3 PBS, 0.05% NaN ₃ , 50% Glycerol. |
| Purification Method | Antigen Affinity Purified |
| Clonality | Polyclonal |
| Alias | SMT3A; Smt3B; SMT3H1; SUMO-3; HSMT3; SMT3B; SUMO3; Smt3A; SMT3H2; IDDM5; SMT3H4; SUMO-4; dJ281H8.4 |
| Product Type | Polyclonal Antibody |
| Immunogen Species | Homo sapiens (Human) |
| Target Names | SUMO2 |

Image



Gel: 15%+12%SDS-PAGE Lysates (from left to right): Human small intestine stromal cancer tissue Amount of lysate: 40µg per lane Primary antibody: 1/800 dilution Secondary antibody dilution: 1/8000 Exposure time: 10 seconds



Immunohistochemical analysis of paraffin-embedded Human colon cancer tissue using at dilution 1/100.



Usage

For Research Use Only. Not for use in diagnostic or therapeutic procedures.