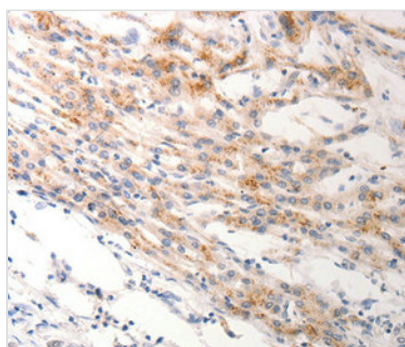




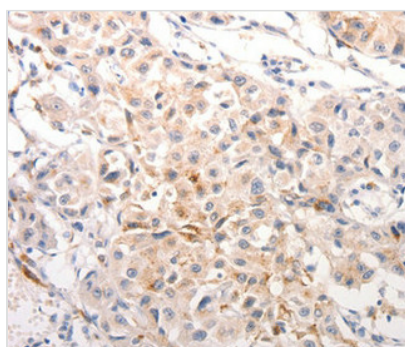
KRT6B Antibody

Product Code	CSB-PA289802
Storage	Upon receipt, store at -20°C or -80°C. Avoid repeated freeze.
Uniprot No.	P04259
Immunogen	Synthetic peptide corresponding to a region derived from internal residues of Human keratin 6B
Raised In	Rabbit
Species Reactivity	Human,Mouse,Rat
Specificity	The antibody detects endogenous levels of total KRT6B protein.
Tested Applications	ELISA,IHC;IHC:1:50-1:100
Form	Rabbit IgG in pH7.3 PBS, 0.05% NaN ₃ , 50% Glycerol.
Purification Method	Antigen Affinity Purified
Clonality	Polyclonal
Alias	K6B; PC2; CK6B; CK-6B; KRTL1
Product Type	Polyclonal Antibody
Immunogen Species	Homo sapiens (Human)
Target Names	KRT6B

Image



Immunohistochemical analysis of paraffin-embedded Human lung cancer tissue using at dilution 1/0.



Immunohistochemical analysis of paraffin-embedded Human breast cancer tissue using.

Usage

For Research Use Only. Not for use in diagnostic or therapeutic procedures.