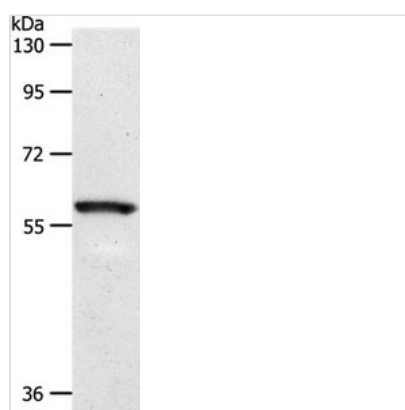




SLC5A1 Antibody

Product Code	CSB-PA218464
Storage	Upon receipt, store at -20°C or -80°C. Avoid repeated freeze.
Uniprot No.	P13866
Immunogen	Synthetic peptide corresponding to a region derived from internal residues of Human solute carrier family 5 (sodium/glucose cotransporter), member 1
Raised In	Rabbit
Species Reactivity	Human,Mouse,Rat
Specificity	The antibody detects endogenous levels of total SLC5A1 protein.
Tested Applications	ELISA,WB;WB:1:500-1:3000
Form	Rabbit IgG in pH7.3 PBS, 0.05% NaN ₃ , 50% Glycerol.
Purification Method	Antigen Affinity Purified
Clonality	Polyclonal
Alias	NAGT; SGLT1; D22S675
Product Type	Polyclonal Antibody
Immunogen Species	Homo sapiens (Human)
Target Names	SLC5A1

Image



Gel: 10%SDS-PAGE Lysates (from left to right):
 Mouse eye tissue Amount of lysate: 40µg per
 lane Primary antibody: 1/1100 dilution
 Secondary antibody dilution: 1/8000 Exposure
 time: 2 seconds