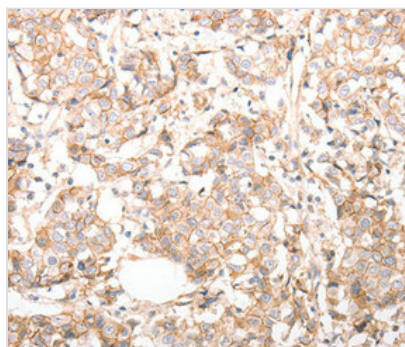




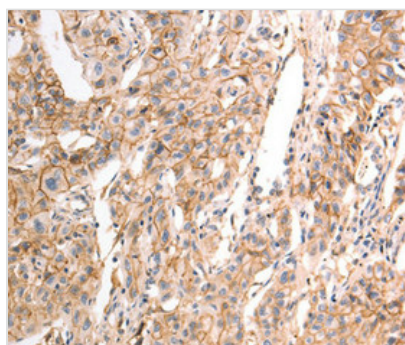
CDH23 Antibody

Product Code	CSB-PA094215
Storage	Upon receipt, store at -20°C or -80°C. Avoid repeated freeze.
Uniprot No.	Q9H251
Immunogen	Synthetic peptide corresponding to residues near the C terminal of Human pan-cadherin
Raised In	Rabbit
Species Reactivity	Human, Mouse, Rat
Specificity	The antibody detects endogenous levels of total pan CDH protein.
Tested Applications	ELISA, IHC; IHC: 1:50-1:100
Form	Rabbit IgG in pH7.3 PBS, 0.05% NaN ₃ , 50% Glycerol.
Purification Method	Antigen Affinity Purified
Clonality	Polyclonal
Alias	KIAA1774; KIAA1812
Product Type	Polyclonal Antibody
Immunogen Species	Homo sapiens (Human)
Target Names	CDH23

Image



Immunohistochemical analysis of paraffin-embedded Human breast cancer tissue using at dilution 1/30.



Immunohistochemical analysis of paraffin-embedded Human liver cancer tissue using at dilution 1/30.

Usage

For Research Use Only. Not for use in diagnostic or therapeutic procedures.