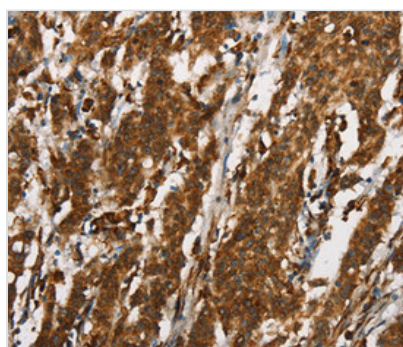




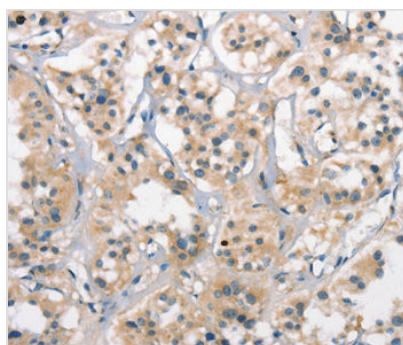
CTAG1A Antibody

Product Code	CSB-PA825329
Storage	Upon receipt, store at -20°C or -80°C. Avoid repeated freeze.
Uniprot No.	P78358
Immunogen	Synthetic peptide corresponding to a region derived from internal residues of Human Cancer/testis antigen 1
Raised In	Rabbit
Species Reactivity	Human,Mouse,Rat
Specificity	The antibody detects endogenous levels of total CTAG1A/B protein.
Tested Applications	ELISA,IHC;IHC:1:50-1:100
Form	Rabbit IgG in pH7.3 PBS, 0.05% NaN ₃ , 50% Glycerol.
Purification Method	Antigen Affinity Purified
Clonality	Polyclonal
Alias	CTAG; CTAG1; ESO1; LAGE2; LAGE2A/CTAG1B
Product Type	Polyclonal Antibody
Immunogen Species	Homo sapiens (Human)
Target Names	CTAG1A

Image



Immunohistochemical analysis of paraffin-embedded Human gastric cancer tissue using at dilution 1/25.



Immunohistochemical analysis of paraffin-embedded Human thyroid cancer tissue using at dilution 1/25.