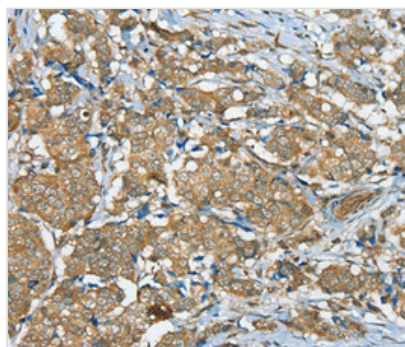




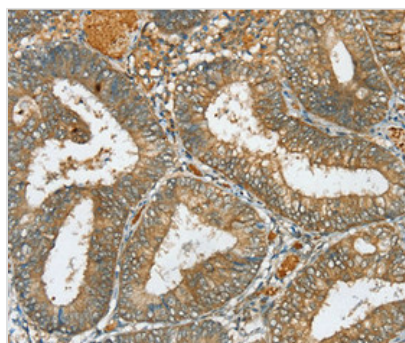
# SERINC3 Antibody

<b>Product Code</b>	CSB-PA984539
<b>Storage</b>	Upon receipt, store at -20°C or -80°C. Avoid repeated freeze.
<b>Uniprot No.</b>	Q13530
<b>Immunogen</b>	Synthetic peptide corresponding to a region derived from internal residues of Human serine incorporator 3
<b>Raised In</b>	Rabbit
<b>Species Reactivity</b>	Human,Mouse,Rat
<b>Specificity</b>	The antibody detects endogenous levels of total SERINC3 protein.
<b>Tested Applications</b>	ELISA,IHC;IHC:1:50-1:100
<b>Form</b>	Rabbit IgG in pH7.3 PBS, 0.05% NaN <sub>3</sub> , 50% Glycerol.
<b>Purification Method</b>	Antigen Affinity Purified
<b>Clonality</b>	Polyclonal
<b>Alias</b>	TDE; TDE1; AIGP1; TMS-1; DIFF33; SBBI99
<b>Product Type</b>	Polyclonal Antibody
<b>Immunogen Species</b>	Homo sapiens (Human)
<b>Target Names</b>	SERINC3

## Image



Immunohistochemical analysis of paraffin-embedded Human breast cancer tissue using at dilution 1/40.



Immunohistochemical analysis of paraffin-embedded Human colon cancer tissue using at dilution 1/40.

## Usage

For Research Use Only. Not for use in diagnostic or therapeutic procedures.