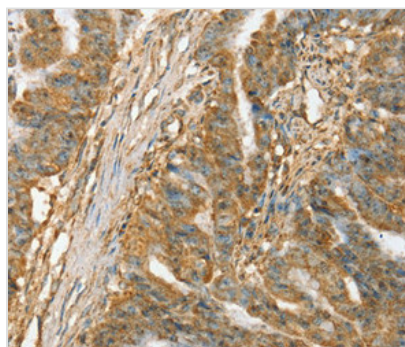




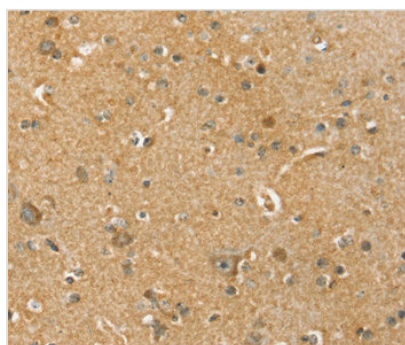
SLC41A3 Antibody

Product Code	CSB-PA207316
Storage	Upon receipt, store at -20°C or -80°C. Avoid repeated freeze.
Uniprot No.	Q96GZ6
Immunogen	Synthetic peptide corresponding to a region derived from internal residues of Human solute carrier family 41, member 3
Raised In	Rabbit
Species Reactivity	Human,Mouse,Rat
Specificity	The antibody detects endogenous levels of total SLC41A3 protein.
Tested Applications	ELISA,IHC;IHC:1:50-1:100
Form	Rabbit IgG in pH7.3 PBS, 0.05% NaN ₃ , 50% Glycerol.
Purification Method	Antigen Affinity Purified
Clonality	Polyclonal
Alias	SLC41A1-L2
Product Type	Polyclonal Antibody
Immunogen Species	Homo sapiens (Human)
Target Names	SLC41A3

Image



Immunohistochemical analysis of paraffin-embedded Human esophagus cancer tissue using at dilution 1/45.



Immunohistochemical analysis of paraffin-embedded Human brain tissue using at dilution 1/45.

Usage

For Research Use Only. Not for use in diagnostic or therapeutic procedures.