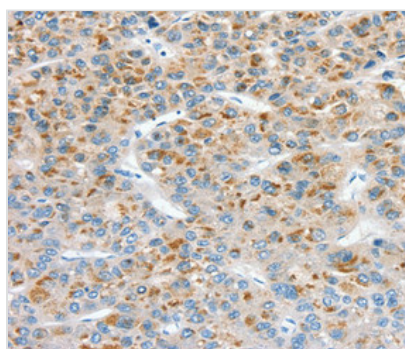




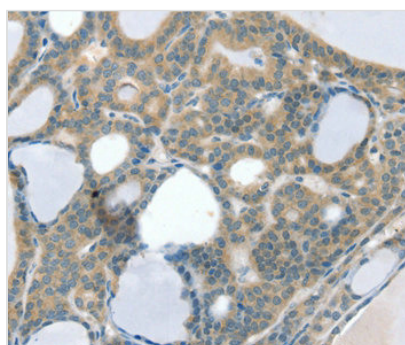
CCS Antibody

Product Code	CSB-PA160405
Storage	Upon receipt, store at -20°C or -80°C. Avoid repeated freeze.
Uniprot No.	O14618
Immunogen	Synthetic peptide corresponding to residues near the C terminal of Human copper chaperone for superoxide dismutase
Raised In	Rabbit
Species Reactivity	Human,Mouse,Rat
Specificity	The antibody detects endogenous levels of total SOD4 protein.
Tested Applications	ELISA,IHC;IHC:1:50-1:100
Form	Rabbit IgG in pH7.3 PBS, 0.05% NaN ₃ , 50% Glycerol.
Purification Method	Antigen Affinity Purified
Clonality	Polyclonal
Alias	sod-4; EC-SOD
Product Type	Polyclonal Antibody
Immunogen Species	Homo sapiens (Human)
Target Names	CCS

Image



Immunohistochemical analysis of paraffin-embedded Human liver cancer tissue using at dilution 1/30.



Immunohistochemical analysis of paraffin-embedded Human thyroid cancer tissue using at dilution 1/30.