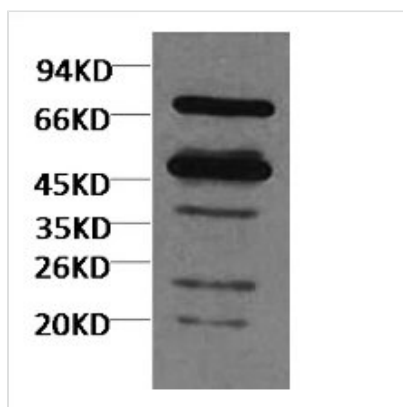




# Rubisco Mouse Polyclonal Antibody(Large Chain)

|                            |   |
|----------------------------|---|
| <b>Product Code</b>        | CSB-PA060093  |
| <b>Storage</b>             | Upon receipt, store at -20°C or -80°C. Avoid repeated freeze.                         |
| <b>Raised In</b>           | Mouse   |
| <b>Species Reactivity</b>  | Various Plants  |
| <b>Specificity</b>         | The Rubisco Mouse Polyclonal Antibody detects endogenous Rubisco Large Chain protein. |
| <b>Tested Applications</b> | WB; Recommended dilution: Western blotting: 1:3000~1:5000                             |
| <b>Form</b>                | Liquid  |
| <b>Purification Method</b> | Antigen Affinity Purified   |
| <b>Clonality</b>           | Polyclonal  |
| <b>Alias</b>               | Ribulose biphosphate carboxylase oxygenase  |

**Image**

Western blot analysis of Arabidopsis thaliana using diluted at 1:5000.

**Usage**

For Research Use Only. Not for use in diagnostic or therapeutic procedures.