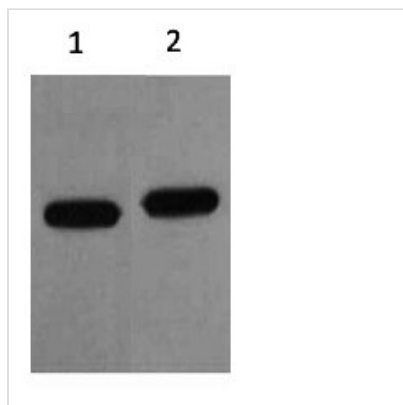




# mCherry Mouse Polyclonal Antibody

<b>Product Code</b>	CSB-PA254229
<b>Storage</b>	Upon receipt, store at -20°C or -80°C. Avoid repeated freeze.
<b>Raised In</b>	Mouse
<b>Specificity</b>	The mCherry tag antibody can recognize mCherry and mCherry tag fusion proteins.
<b>Tested Applications</b>	WB, IHC, IP, IF, ELISA; WB:1:500-1:2000, IHC:1:100-1:300, IP:2-5ug, IF:1:200-1:1000, ELISA:1:20000
<b>Form</b>	Liquid
<b>Purification Method</b>	Antigen Affinity Purified
<b>Clonality</b>	Polyclonal

## Image



Western blot analysis of mCherry Recombinant protein using diluted at 1) 1:5000 2) 1:10000.