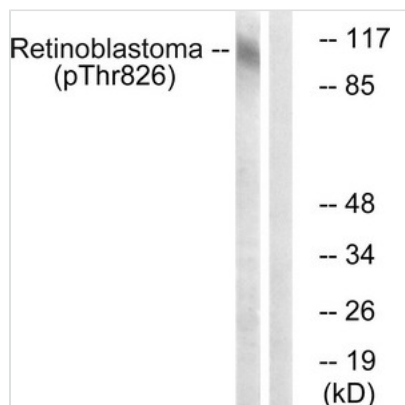




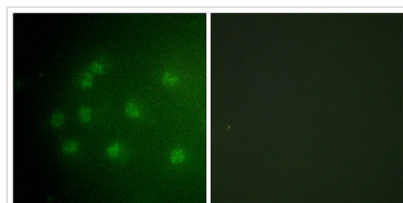
Phospho-RB1 (Thr826) Antibody

Product Code	CSB-PA237047
Storage	Upon receipt, store at -20°C or -80°C. Avoid repeated freeze.
Uniprot No.	P06400
Immunogen	Peptide sequence around phosphorylation site of threonine 826 (K-M-T(p)-P-R) derived from Human Retinoblastoma.
Raised In	Rabbit
Species Reactivity	Human,Mouse,Rat
Specificity	The antibody detects endogenous levels of Retinoblastoma only when phosphorylated at threonine 826.
Tested Applications	ELISA,WB,IF;WB:1:500-1:1000,IF:1:100-1:200
Form	Rabbit IgG in phosphate buffered saline (without Mg ²⁺ and Ca ²⁺), pH 7.4, 150mM NaCl, 0.02% sodium azide and 50% glycerol.
Purification Method	Antibodies were produced by immunizing rabbits with synthetic phosphopeptide and KLH conjugates. Antibodies were purified by affinity-chromatography using epitope-specific phosphopeptide. Non-phospho specific antibodies were removed by chromatography usi
Clonality	Polyclonal
Alias	P105-RB; PP105; PP110; RB-1; RB1; Retinoblastoma-associated protein
Product Type	Polyclonal Antibody
Immunogen Species	Homo sapiens (Human)
Target Names	RB1

Image



Western blot analysis of extracts from HepG2 cells, treated with nocodazole (1µg/ml, 16hours), using Retinoblastoma (Phospho-Thr826) antibody. The lane on the right is treated with the synthesized peptide.



Immunofluorescence analysis of COS7 cells, using Retinoblastoma (Phospho-Thr826) antibody. The picture on the right is treated with the synthesized peptide.



Product Modify

Phospho-Thr826

Usage

For Research Use Only. Not for use in diagnostic or therapeutic procedures.