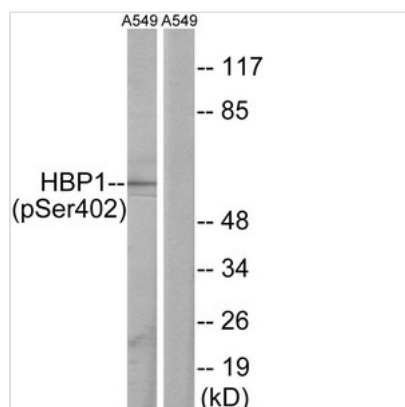




Phospho-HBP1 (Ser402) Antibody

Product Code	CSB-PA204919
Storage	Upon receipt, store at -20°C or -80°C. Avoid repeated freeze.
Uniprot No.	O60381
Immunogen	Peptide sequence around phosphorylation site of serine 402 (C-G-S(p)-P-G) derived from Human HBP1.
Raised In	Rabbit
Species Reactivity	Human,Mouse
Specificity	The antibody detects endogenous levels of HBP1 only when phosphorylated at serine 402.
Tested Applications	ELISA,WB;WB:1:500-1:3000
Form	Rabbit IgG in phosphate buffered saline (without Mg ²⁺ and Ca ²⁺), pH 7.4, 150mM NaCl, 0.02% sodium azide and 50% glycerol.
Purification Method	Antibodies were produced by immunizing rabbits with synthetic phosphopeptide and KLH conjugates. Antibodies were purified by affinity-chromatography using epitope-specific phosphopeptide. Non-phospho specific antibodies were removed by chromatography using
Clonality	Polyclonal
Alias	HMG box containing protein 1
Product Type	Polyclonal Antibody
Immunogen Species	Homo sapiens (Human)
Target Names	HBP1

Image



Western blot analysis of extracts from A549 cells, treated with PMA (125ng/ml, 30mins), using HBP1 (Phospho-Ser402) antibody. The lane on the right is treated with the synthesized peptide.

Product Modify Phospho-Ser402