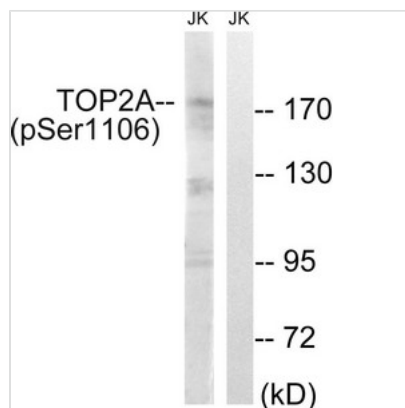




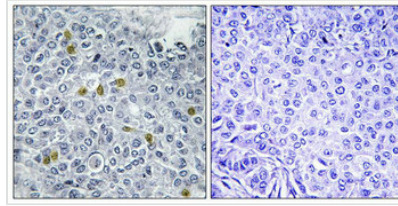
# Phospho-TOP2A (Ser1106) Antibody

<b>Product Code</b>	CSB-PA949180
<b>Storage</b>	Upon receipt, store at -20°C or -80°C. Avoid repeated freeze.
<b>Uniprot No.</b>	P11388
<b>Immunogen</b>	Peptide sequence around phosphorylation site of serine 1106 (E-E-S(p)-D-N) derived from Human TOP2A.
<b>Raised In</b>	Rabbit
<b>Species Reactivity</b>	Human,Mouse
<b>Specificity</b>	The antibody detects endogenous levels of TOP2A only when phosphorylated at serine 1106.
<b>Tested Applications</b>	ELISA,WB,IHC;WB:1:500-1:3000,IHC:1:50-1:100
<b>Form</b>	Rabbit IgG in phosphate buffered saline (without Mg <sup>2+</sup> and Ca <sup>2+</sup> ), pH 7.4, 150mM NaCl, 0.02% sodium azide and 50% glycerol.
<b>Purification Method</b>	Antibodies were produced by immunizing rabbits with synthetic phosphopeptide and KLH conjugates. Antibodies were purified by affinity-chromatography using epitope-specific phosphopeptide. Non-phospho specific antibodies were removed by chromatography use
<b>Clonality</b>	Polyclonal
<b>Alias</b>	alpha isozyme; DNA topoisomerase II; DNA topoisomerase II-alpha; EC 5.99.1.3; P11388-1; TOP-2; TOP2; TOP2A; TP2A
<b>Product Type</b>	Polyclonal Antibody
<b>Immunogen Species</b>	Homo sapiens (Human)
<b>Target Names</b>	TOP2A

## Image



Western blot analysis of extracts from Jurkat cells, treated with paclitaxel (1uM, 24hours), using TOP2A (Phospho-Ser1106) antibody. The lane on the right is treated with the synthesized peptide.



Immunohistochemistry analysis of paraffin-embedded human breast carcinoma tissue using TOP2A (Phospho-Ser1106) antibody. The picture on the right is treated with the synthesized peptide.

---

**Product Modify**

Phospho-Ser1106

---

**Usage**

For Research Use Only. Not for use in diagnostic or therapeutic procedures.