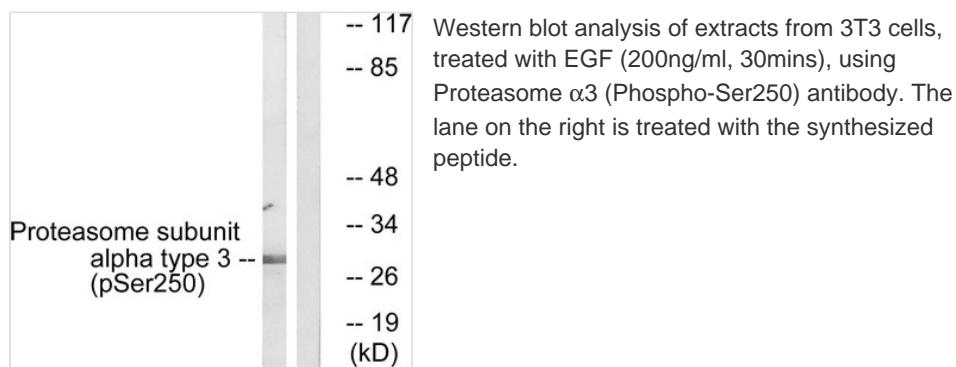




Phospho-PSMA3 (Ser250) Antibody

Product Code	CSB-PA264880
Storage	Upon receipt, store at -20°C or -80°C. Avoid repeated freeze.
Uniprot No.	P25788
Immunogen	Peptide sequence around phosphorylation site of serine 250 (D-E-S(p)-D-D) derived from Human Proteasome α 3.
Raised In	Rabbit
Species Reactivity	Human,Mouse,Rat
Specificity	The antibody detects endogenous levels of Proteasome α 3 only when phosphorylated at serine 250.
Tested Applications	ELISA,WB;WB:1:500-1:3000
Form	Rabbit IgG in phosphate buffered saline (without Mg ²⁺ and Ca ²⁺), pH 7.4, 150mM NaCl, 0.02% sodium azide and 50% glycerol.
Purification Method	Antibodies were produced by immunizing rabbits with synthetic phosphopeptide and KLH conjugates. Antibodies were purified by affinity-chromatography using epitope-specific phosphopeptide. Non-phospho specific antibodies were removed by chromatography use
Clonality	Polyclonal
Alias	EC 3.4.25.1; Macropain subunit C8; Multicatalytic endopeptidase complex subunit C8; proteasome component C8; Proteasome subunit alpha type 3; PSA3; PSC8
Product Type	Polyclonal Antibody
Immunogen Species	Homo sapiens (Human)
Target Names	PSMA3

Image



Product Modify	Phospho-Ser250
Usage	For Research Use Only. Not for use in diagnostic or therapeutic procedures.