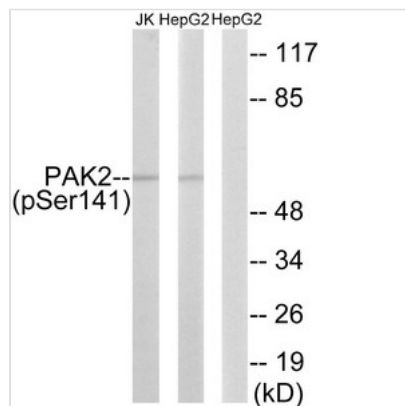




Phospho-PAK2 (Ser141) Antibody

Product Code	CSB-PA951578
Storage	Upon receipt, store at -20°C or -80°C. Avoid repeated freeze.
Uniprot No.	Q13177
Immunogen	Peptide sequence around phosphorylation site of serine 141 (Y-L-S(p)-F-T) derived from Human PAK2.
Raised In	Rabbit
Species Reactivity	Human,Mouse,Rat
Specificity	The antibody detects endogenous levels of PAK2 only when phosphorylated at serine 141.
Tested Applications	ELISA,WB;WB:1:500-1:3000
Form	Rabbit IgG in phosphate buffered saline (without Mg ²⁺ and Ca ²⁺), pH 7.4, 150mM NaCl, 0.02% sodium azide and 50% glycerol.
Purification Method	Antibodies were produced by immunizing rabbits with synthetic phosphopeptide and KLH conjugates. Antibodies were purified by affinity-chromatography using epitope-specific phosphopeptide. Non-phospho specific antibodies were removed by chromatography usi
Clonality	Polyclonal
Alias	EC 2.7.11.1; gamma-PAK; kinase PAK2; P21-activated kinase 2; p21-activated kinase 2; p21-activated protein kinase I; PAK 2; PAK-2; PAK65; PAKI; S6/H4 kinase
Product Type	Polyclonal Antibody
Immunogen Species	Homo sapiens (Human)
Target Names	PAK2

Image



Western blot analysis of extracts from HepG2 cells treated with Adriamycin (0.5uM, 24hours) and Jurkat cells treated with PMA (125ng/ml, 30mins) using PAK2 (Phospho-Ser141) antibody. The lane on the right is treated with the synthesized peptide.

Product Modify	Phospho-Ser141
Usage	For Research Use Only. Not for use in diagnostic or therapeutic procedures.