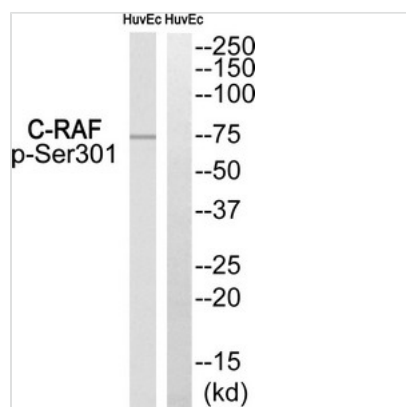




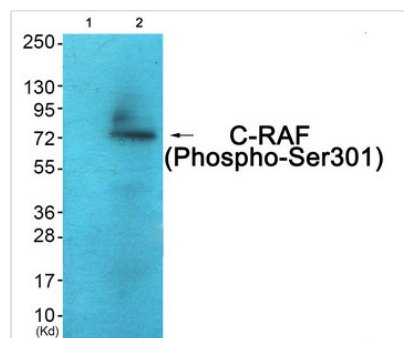
# Phospho-RAF1 (Ser301) Antibody

<b>Product Code</b>	CSB-PA948259
<b>Storage</b>	Upon receipt, store at -20°C or -80°C. Avoid repeated freeze.
<b>Uniprot No.</b>	P04049
<b>Immunogen</b>	Peptide sequence around phosphorylation site of Serine301 (N-L-S(p)-P-T) derived from Human C-RAF.
<b>Raised In</b>	Rabbit
<b>Species Reactivity</b>	Human,Mouse,Rat
<b>Specificity</b>	The antibody detects endogenous levels of C-RAF only when phosphorylated at Ser301.
<b>Tested Applications</b>	ELISA,WB;WB:1:500-1:3000
<b>Form</b>	Rabbit IgG in phosphate buffered saline (without Mg <sup>2+</sup> and Ca <sup>2+</sup> ), pH 7.4, 150mM NaCl, 0.02% sodium azide and 50% glycerol.
<b>Purification Method</b>	Antibodies were produced by immunizing rabbits with synthetic phosphopeptide and KLH conjugates. Antibodies were purified by affinity-chromatography using epitope-specific phosphopeptide. Non-phospho specific antibodies were removed by chromatography
<b>Clonality</b>	Polyclonal
<b>Alias</b>	RAF proto-oncogene serine/threonine-protein kinase EC=2.7.11.1; Proto-oncogene c-RAF;cRaf; RAF; RAF1
<b>Product Type</b>	Polyclonal Antibody
<b>Immunogen Species</b>	Homo sapiens (Human)
<b>Target Names</b>	RAF1

## Image



Western blot analysis of extracts from HuvEc, using C-RAF (Phospho-Ser301) antibody. The lane on the right is treated with the synthesized peptide.



Western blot analysis of extracts from COS7 cells (Lane 2), using C-RAF (Phospho-Ser301) Antibody. The lane on the left is treated with synthesized peptide.

**Product Modify**

Phospho-Ser301