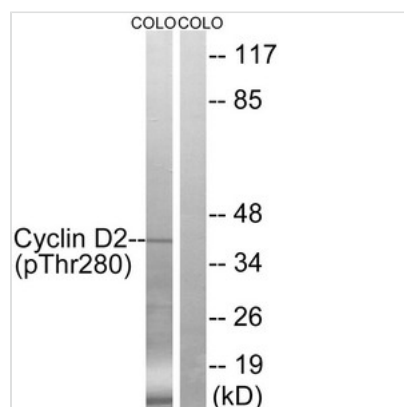




Phospho-CCND2 (Thr280) Antibody

Product Code	CSB-PA211813
Storage	Upon receipt, store at -20°C or -80°C. Avoid repeated freeze.
Uniprot No.	P30279
Immunogen	Peptide sequence around phosphorylation site of threonine 280 (A-S-T(p)-P-T) derived from Human Cyclin D2.
Raised In	Rabbit
Species Reactivity	Human,Mouse,Rat
Specificity	The antibody detects endogenous levels of Cyclin D2 only when phosphorylated at threonine 280.
Tested Applications	ELISA,WB;WB:1:500-1:3000
Form	Rabbit IgG in phosphate buffered saline (without Mg ²⁺ and Ca ²⁺), pH 7.4, 150mM NaCl, 0.02% sodium azide and 50% glycerol.
Purification Method	Antibodies were produced by immunizing rabbits with synthetic phosphopeptide and KLH conjugates. Antibodies were purified by affinity-chromatography using epitope-specific phosphopeptide. Non-phospho specific antibodies were removed by chromatography
Clonality	Polyclonal
Alias	cyclin D2; G1/S-specific cyclin D2
Product Type	Polyclonal Antibody
Immunogen Species	Homo sapiens (Human)
Target Names	CCND2

Image



Western blot analysis of extracts from COLO cells, treated with EGF (200ng/ml, 30mins), using Cyclin D2 (Phospho-Thr280) antibody. The lane on the right is treated with the synthesized peptide.

Product Modify	Phospho-Thr280
Usage	For Research Use Only. Not for use in diagnostic or therapeutic procedures.