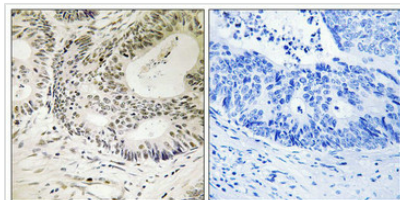




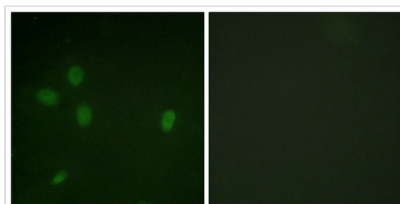
Phospho-TP53BP1 (Ser25) Antibody

Product Code	CSB-PA019493
Storage	Upon receipt, store at -20°C or -80°C. Avoid repeated freeze.
Uniprot No.	Q12888
Immunogen	Peptide sequence around phosphorylation site of serine 25 (E-D-S(p)-Q-P) derived from Human 53BP1.
Raised In	Rabbit
Species Reactivity	Human,Mouse,Rat
Specificity	The antibody detects endogenous levels of 53BP1 only when phosphorylated at serine 25.
Tested Applications	ELISA,IHC,IF;IHC:1:50-1:100,IF:1:100-1:500
Form	Rabbit IgG in phosphate buffered saline (without Mg ²⁺ and Ca ²⁺), pH 7.4, 150mM NaCl, 0.02% sodium azide and 50% glycerol.
Purification Method	Antibodies were produced by immunizing rabbits with synthetic phosphopeptide and KLH conjugates. Antibodies were purified by affinity-chromatography using epitope-specific phosphopeptide. Non-phospho specific antibodies were removed by chromatography usi
Clonality	Polyclonal
Alias	P531; TP53B; TP53BP1; TRP53BP1; Tumor suppressor p53-binding protein 1; p53-binding protein 1
Product Type	Polyclonal Antibody
Immunogen Species	Homo sapiens (Human)
Target Names	TP53BP1

Image



Immunohistochemistry analysis of paraffin-embedded human colon carcinoma tissue using 53BP1 (Phospho-Ser25) antibody. The picture on the right is treated with the synthesized peptide.



Immunofluorescence analysis of NIH/3T3 cells, using 53BP1 (Phospho-Ser25) antibody. The picture on the right is treated with the synthesized peptide.

Product Modify	Phospho-Ser25
Usage	For Research Use Only. Not for use in diagnostic or therapeutic procedures.