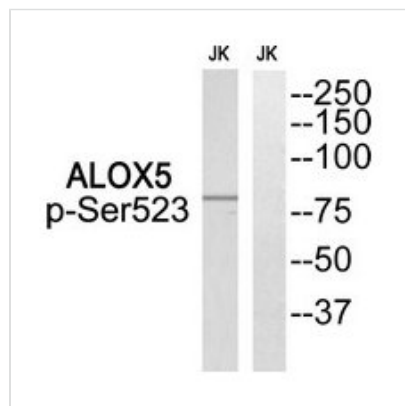




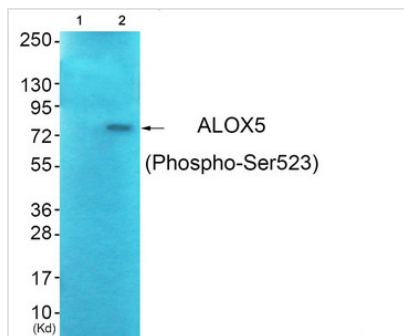
# Phospho-ALOX5 (Ser523) Antibody

<b>Product Code</b>	CSB-PA555261
<b>Storage</b>	Upon receipt, store at -20°C or -80°C. Avoid repeated freeze.
<b>Uniprot No.</b>	P09917
<b>Immunogen</b>	Peptide sequence around phosphorylation site of serine 523 (R-K-S(p)-K-G) derived from Human ALOX5.
<b>Raised In</b>	Rabbit
<b>Species Reactivity</b>	Human,Rat
<b>Specificity</b>	The antibody detects endogenous levels of ALOX5 only when phosphorylated at serine523.
<b>Tested Applications</b>	ELISA,WB;WB:1:500-1:3000
<b>Form</b>	Rabbit IgG in phosphate buffered saline (without Mg <sup>2+</sup> and Ca <sup>2+</sup> ), pH 7.4, 150mM NaCl, 0.02% sodium azide and 50% glycerol.
<b>Purification Method</b>	Antibodies were produced by immunizing rabbits with synthetic phosphopeptide and KLH conjugates. Antibodies were purified by affinity-chromatography using epitope-specific phosphopeptide. Non-phospho specific antibodies were removed by chromatography
<b>Clonality</b>	Polyclonal
<b>Alias</b>	5-lipoxygenase; 5-LO; 5-LOX; 5LPG; ALOX5; Arachidonate 5-lipoxygenase; arachidonic acid 5-lipoxygenase; leukotriene A4 synthase; LOG5; LOX5; MGC163204
<b>Product Type</b>	Polyclonal Antibody
<b>Immunogen Species</b>	Homo sapiens (Human)
<b>Target Names</b>	ALOX5

## Image



Western blot analysis of extracts from Jurkat cells, using ALOX5 (Phospho-Ser523) antibody. The lane on the right is treated with the synthesized peptide.



Western blot analysis of extracts from JK cells (Lane 2), using ALOX5 (Phospho-Ser523) Antibody. The lane on the left is treated with synthesized peptide.

**Product Modify**

Phospho-Ser523

**Usage**

For Research Use Only. Not for use in diagnostic or therapeutic procedures.