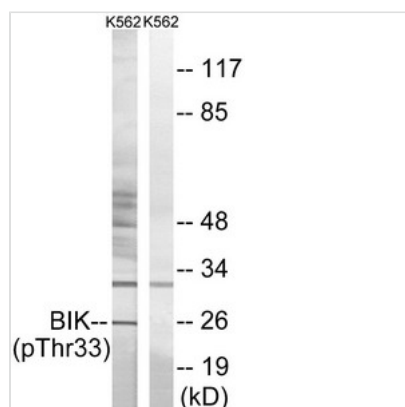




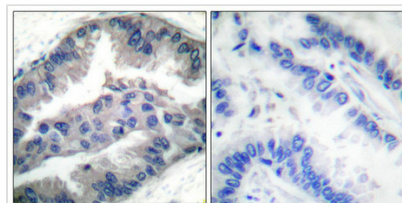
# Phospho-BIK (Thr33) Antibody

<b>Product Code</b>	CSB-PA057445
<b>Storage</b>	Upon receipt, store at -20°C or -80°C. Avoid repeated freeze.
<b>Uniprot No.</b>	Q13323
<b>Immunogen</b>	Peptide sequence around phosphorylation site of threonine 33 (G-M-T(p)-D-S) derived from Human BIK.
<b>Raised In</b>	Rabbit
<b>Species Reactivity</b>	Human
<b>Specificity</b>	The antibody detects endogenous levels of BIK only when phosphorylated at threonine 33.
<b>Tested Applications</b>	ELISA,WB,IHC;WB:1:500-1:3000,IHC:1:50-1:100
<b>Form</b>	Rabbit IgG in phosphate buffered saline (without Mg <sup>2+</sup> and Ca <sup>2+</sup> ), pH 7.4, 150mM NaCl, 0.02% sodium azide and 50% glycerol.
<b>Purification Method</b>	Antibodies were produced by immunizing rabbits with synthetic phosphopeptide and KLH conjugates. Antibodies were purified by affinity-chromatography using epitope-specific phosphopeptide. Non-phospho specific antibodies were removed by chromatography usi
<b>Clonality</b>	Polyclonal
<b>Alias</b>	Apoptosis inducer NBK; BIKLK; BIP1; BP4; Bcl-2 interacting killer; NBK
<b>Product Type</b>	Polyclonal Antibody
<b>Immunogen Species</b>	Homo sapiens (Human)
<b>Target Names</b>	BIK

## Image



Western blot analysis of extracts from K562 cells, using BIK (Phospho-Thr33) antibody. The lane on the right is treated with the synthesized peptide.



Immunohistochemical analysis of paraffin-embedded human lung carcinoma tissue, using BIK (Phospho-Thr33) antibody. The picture on the right is treated with the synthesized peptide.



---

**Product Modify**

Phospho-Thr33

**Usage**

For Research Use Only. Not for use in diagnostic or therapeutic procedures.