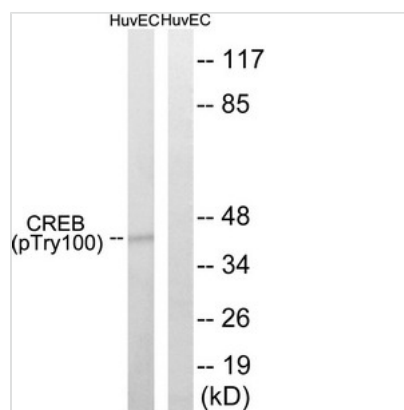




Phospho-CREB1 (Thr100) Antibody

Product Code	CSB-PA055839
Storage	Upon receipt, store at -20°C or -80°C. Avoid repeated freeze.
Uniprot No.	P16220
Immunogen	Peptide sequence around phosphorylation site of threonine 100 (S-G-T(p)-Q-I) derived from Human CREB.
Raised In	Rabbit
Species Reactivity	Human,Mouse,Rat
Specificity	The antibody detects endogenous levels of CREB only when phosphorylated at threonine 100.
Tested Applications	ELISA,WB;WB:1:500-1:3000
Form	Rabbit IgG in phosphate buffered saline (without Mg ²⁺ and Ca ²⁺), pH 7.4, 150mM NaCl, 0.02% sodium azide and 50% glycerol.
Purification Method	Antibodies were produced by immunizing rabbits with synthetic phosphopeptide and KLH conjugates. Antibodies were purified by affinity-chromatography using epitope-specific phosphopeptide. Non-phospho specific antibodies were removed by chromatography
Clonality	Polyclonal
Alias	cAMP responsive element binding protein 1; cAMP-response element binding protein; CREB-1; CREB1
Product Type	Polyclonal Antibody
Immunogen Species	Homo sapiens (Human)
Target Names	CREB1

Image



Western blot analysis of extracts from HUVEC cells, treated with etoposide (25uM, 24hours), using CREB (Phospho-Thr100) antibody. The lane on the right is treated with the synthesized peptide.

Product Modify Phospho-Thr100