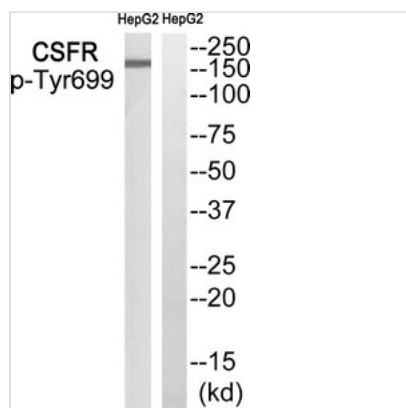




Phospho-CSF1R (Tyr699) Antibody

Product Code	CSB-PA152912
Storage	Upon receipt, store at -20°C or -80°C. Avoid repeated freeze.
Uniprot No.	P07333
Immunogen	Peptide sequence around phosphorylation site of tyrosine 699 (V-D-Y(p)-K-N) derived from Human CSF1R.
Raised In	Rabbit
Species Reactivity	Human
Specificity	The antibody detects endogenous levels of CSF1R only when phosphorylated at tyrosine 699.
Tested Applications	ELISA,WB;WB:1:500-1:3000
Form	Rabbit IgG in phosphate buffered saline (without Mg ²⁺ and Ca ²⁺), pH 7.4, 150mM NaCl, 0.02% sodium azide and 50% glycerol.
Purification Method	Antibodies were produced by immunizing rabbits with synthetic phosphopeptide and KLH conjugates. Antibodies were purified by affinity-chromatography using epitope-specific phosphopeptide. Non-phospho specific antibodies were removed by chromatography usi
Clonality	Polyclonal
Alias	C-FMS; CD115; CD115 antigen; colony stimulating factor 1 receptor; CSF-1-R; CSF1R; CSFR; FIM2; FMS; FMS proto-oncogene; macrophage colony stimulating factor I receptor; Macrophage colony-stimulating factor 1 receptor; McDonough feline sarcoma viral (v-fms
Product Type	Polyclonal Antibody
Immunogen Species	Homo sapiens (Human)
Target Names	CSF1R

Image



Western blot analysis of extracts from HepG2 cells, using CSFR (Phospho-Tyr699) antibody. The lane on the right is treated with the synthesized peptide.

Product Modify	Phospho-Tyr699
Usage	For Research Use Only. Not for use in diagnostic or therapeutic procedures.