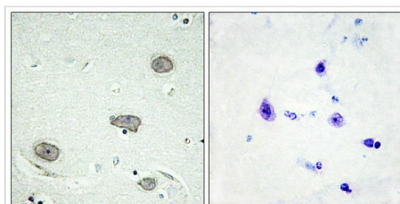




# Phospho-CSF1R (Tyr809) Antibody

<b>Product Code</b>	CSB-PA940519
<b>Storage</b>	Upon receipt, store at -20°C or -80°C. Avoid repeated freeze.
<b>Uniprot No.</b>	P07333
<b>Immunogen</b>	Peptide sequence around phosphorylation site of tyrosine 809 (S-N-Y(p)-I-V) derived from Human CSFR.
<b>Raised In</b>	Rabbit
<b>Species Reactivity</b>	Human
<b>Specificity</b>	The antibody detects endogenous levels of CSFR only when phosphorylated at tyrosine 809.
<b>Tested Applications</b>	ELISA,IHC;IHC:1:50-1:100
<b>Form</b>	Rabbit IgG in phosphate buffered saline (without Mg <sup>2+</sup> and Ca <sup>2+</sup> ), pH 7.4, 150mM NaCl, 0.02% sodium azide and 50% glycerol.
<b>Purification Method</b>	Antibodies were produced by immunizing rabbits with synthetic phosphopeptide and KLH conjugates. Antibodies were purified by affinity-chromatography using epitope-specific phosphopeptide. Non-phospho specific antibodies were removed by chromatography
<b>Clonality</b>	Polyclonal
<b>Alias</b>	CD115; CSF-1-R; CSF1R; CSFMR; EC 2.7.10.1; FMS; Fms proto-oncogene; M-CSFR; Macrophage colony stimulating factor I receptor precursor; c-fms; kinase CSFR
<b>Product Type</b>	Polyclonal Antibody
<b>Immunogen Species</b>	Homo sapiens (Human)
<b>Target Names</b>	CSF1R

## Image



Immunohistochemistry analysis of paraffin-embedded human brain tissue using CSFR (Phospho-Tyr809) antibody. The picture on the right is treated with the synthesized peptide.

**Product Modify** Phospho-Tyr809