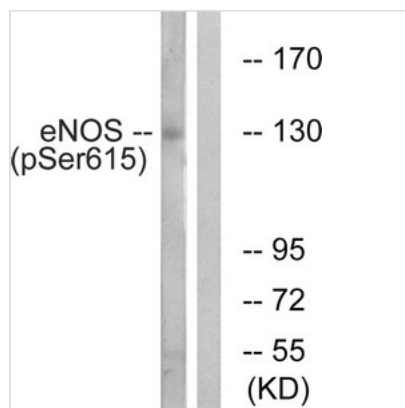




Phospho-NOS3 (Ser615) Antibody

Product Code	CSB-PA921078
Storage	Upon receipt, store at -20°C or -80°C. Avoid repeated freeze.
Uniprot No.	P29474
Immunogen	Peptide sequence around phosphorylation site of serine 615 (F-N-S(p)-I-S) derived from Human eNOS.
Raised In	Rabbit
Species Reactivity	Human,Mouse,Rat
Specificity	The antibody detects endogenous levels of eNOS only when phosphorylated at serine 615.
Tested Applications	ELISA,WB;WB:1:500-1:3000
Form	Rabbit IgG in phosphate buffered saline (without Mg ²⁺ and Ca ²⁺), pH 7.4, 150mM NaCl, 0.02% sodium azide and 50% glycerol.
Purification Method	Antibodies were produced by immunizing rabbits with synthetic phosphopeptide and KLH conjugates. Antibodies were purified by affinity-chromatography using epitope-specific phosphopeptide. Non-phospho specific antibodies were removed by chromatography use
Clonality	Polyclonal
Alias	Constitutive NOS; EC 1.14.13.39; EC-NOS; ECNOS; Endothelial NOS; NOS; type III; NOS3; NOSIII; Nitric-oxide synthase; endothelial; cNOS
Product Type	Polyclonal Antibody
Immunogen Species	Homo sapiens (Human)
Target Names	NOS3

Image



Western blot analysis of extracts from K562 cells, treated with EGF (40nM, 30mins), using eNOS (Phospho-Ser615) antibody. The lane on the right is treated with the synthesized peptide.

Product Modify	Phospho-Ser615
Usage	For Research Use Only. Not for use in diagnostic or therapeutic procedures.