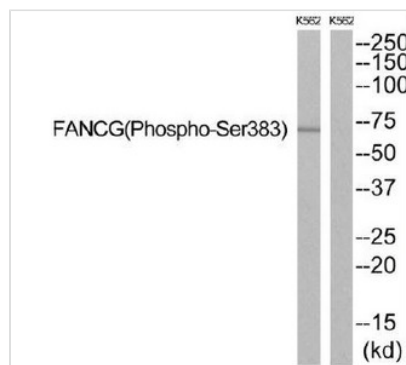




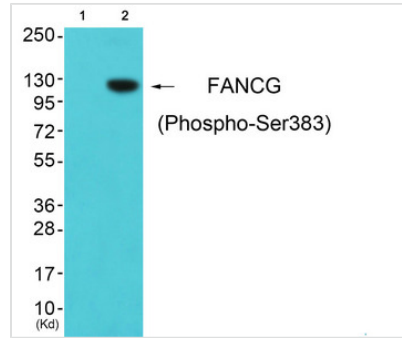
Phospho-FANCG (Ser383) Antibody

| | |
|----------------------------|--|
| Product Code | CSB-PA972302 |
| Storage | Upon receipt, store at -20°C or -80°C. Avoid repeated freeze. |
| Uniprot No. | O15287 |
| Immunogen | Peptide sequence around phosphorylation site of serine 383 (R-F-S(p)-P-P) derived from Human FANCG. |
| Raised In | Rabbit |
| Species Reactivity | Human |
| Specificity | The antibody detects endogenous levels of FANCG only when phosphorylated at serine 383. |
| Tested Applications | ELISA,WB;WB:1:500-1:3000 |
| Form | Rabbit IgG in phosphate buffered saline (without Mg ²⁺ and Ca ²⁺), pH 7.4, 150mM NaCl, 0.02% sodium azide and 50% glycerol. |
| Purification Method | Antibodies were produced by immunizing rabbits with synthetic phosphopeptide and KLH conjugates. Antibodies were purified by affinity-chromatography using epitope-specific phosphopeptide. Non-phospho specific antibodies were removed by chromatography use |
| Clonality | Polyclonal |
| Alias | Fanconi anemia group G protein;Protein FACG;DNA repair protein XRCC9 |
| Product Type | Polyclonal Antibody |
| Immunogen Species | Homo sapiens (Human) |
| Target Names | FANCG |

Image



Western blot analysis of extracts from K562 cells, using FANCG (Phospho-Ser383) antibody. The lane on the right is treated with the synthesized peptide.



Western blot analysis of extracts from cos-7 cells (Lane 2), using FANCG (Phospho-Ser383) Antibody. The lane on the left is treated with synthesized peptide

Product Modify

Phospho-Ser383

Usage

For Research Use Only. Not for use in diagnostic or therapeutic procedures.