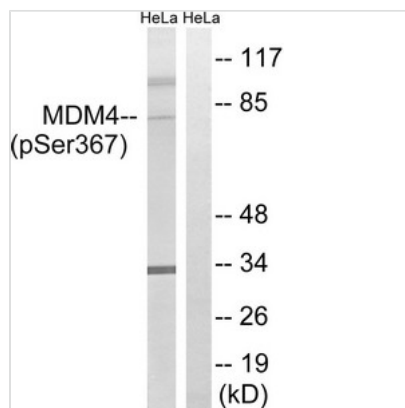




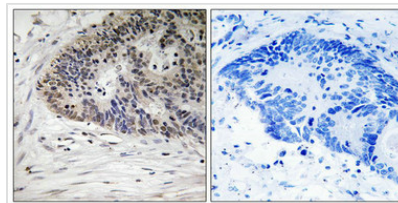
Phospho-MDM4 (Ser367) Antibody

Product Code	CSB-PA975669
Storage	Upon receipt, store at -20°C or -80°C. Avoid repeated freeze.
Uniprot No.	O15151
Immunogen	Peptide sequence around phosphorylation site of serine 367 (T-I-S(p)-A-P) derived from Human MDM4.
Raised In	Rabbit
Species Reactivity	Human,Mouse,Rat
Specificity	The antibody detects endogenous levels of MDM4 only when phosphorylated at serine 367.
Tested Applications	ELISA,WB,IHC;WB:1:500-1:3000,IHC:1:50-1:100
Form	Rabbit IgG in phosphate buffered saline (without Mg ²⁺ and Ca ²⁺), pH 7.4, 150mM NaCl, 0.02% sodium azide and 50% glycerol.
Purification Method	Antibodies were produced by immunizing rabbits with synthetic phosphopeptide and KLH conjugates. Antibodies were purified by affinity-chromatography using epitope-specific phosphopeptide. Non-phospho specific antibodies were removed by chromatography
Clonality	Polyclonal
Alias	double minute 4 protein; Mdm2-like p53-binding protein; MDMX; p53-binding protein Mdm4
Product Type	Polyclonal Antibody
Immunogen Species	Homo sapiens (Human)
Target Names	MDM4

Image



Western blot analysis of extracts from HeLa cells, treated with calyculinA (50ng/ml, 30mins), using MDM4 (Phospho-Ser367) antibody. The lane on the right is treated with the synthesized peptide.



Immunohistochemistry analysis of paraffin-embedded human colon carcinoma tissue using MDM4 (Phospho-Ser367) antibody. The picture on the right is treated with the synthesized peptide.

Product Modify
Phospho-Ser367