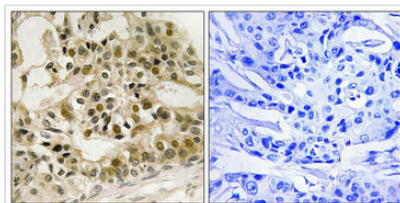




Phospho-MYB (Ser532) Antibody

Product Code	CSB-PA620010
Storage	Upon receipt, store at -20°C or -80°C. Avoid repeated freeze.
Uniprot No.	P10242
Immunogen	Peptide sequence around phosphorylation site of serine 532 (V-E-S(p)-P-T) derived from Human Myb.
Raised In	Rabbit
Species Reactivity	Human,Mouse
Specificity	The antibody detects endogenous levels of Myb only when phosphorylated at serine 532.
Tested Applications	ELISA,IHC;IHC:1:50-1:100
Form	Rabbit IgG in phosphate buffered saline (without Mg ²⁺ and Ca ²⁺), pH 7.4, 150mM NaCl, 0.02% sodium azide and 50% glycerol.
Purification Method	Antibodies were produced by immunizing rabbits with synthetic phosphopeptide and KLH conjugates. Antibodies were purified by affinity-chromatography using epitope-specific phosphopeptide. Non-phospho specific antibodies were removed by chromatography usi
Clonality	Polyclonal
Alias	C-myb; Myb proto-oncogene protein
Product Type	Polyclonal Antibody
Immunogen Species	Homo sapiens (Human)
Target Names	MYB

Image



Immunohistochemistry analysis of paraffin-embedded human breast carcinoma tissue using Myb (Phospho-Ser532) antibody. The picture on the right is treated with the synthesized peptide.

Product Modify	Phospho-Ser532
Usage	For Research Use Only. Not for use in diagnostic or therapeutic procedures.