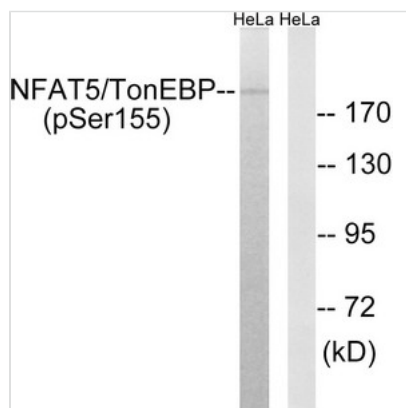




Phospho-NFAT5 (Ser155) Antibody

Product Code	CSB-PA437378
Storage	Upon receipt, store at -20°C or -80°C. Avoid repeated freeze.
Uniprot No.	O94916
Immunogen	Peptide sequence around phosphorylation site of serine 155 (D-N-S(p)-R-M) derived from Human NFAT5/TonEBP.
Raised In	Rabbit
Species Reactivity	Human, Mouse
Specificity	The antibody detects endogenous levels of NFAT5/TonEBP only when phosphorylated at serine 155.
Tested Applications	ELISA, WB; WB: 1:500-1:3000
Form	Rabbit IgG in phosphate buffered saline (without Mg ²⁺ and Ca ²⁺), pH 7.4, 150mM NaCl, 0.02% sodium azide and 50% glycerol.
Purification Method	Antibodies were produced by immunizing rabbits with synthetic phosphopeptide and KLH conjugates. Antibodies were purified by affinity-chromatography using epitope-specific phosphopeptide. Non-phospho specific antibodies were removed by chromatography.
Clonality	Polyclonal
Alias	KIAA0827; NF-AT5; nuclear factor of activated T cells 5; T cell transcription factor NFAT5; TonE-binding protein; TonEBP; tonicity-responsive enhancer-binding protein
Product Type	Polyclonal Antibody
Immunogen Species	Homo sapiens (Human)
Target Names	NFAT5

Image



Western blot analysis of extracts from HeLa cells, treated with forskolin (40nM, 30mins), using NFAT5/TonEBP (Phospho-Ser155) antibody. The lane on the right is treated with the synthesized peptide.

Product Modify	Phospho-Ser155
Usage	For Research Use Only. Not for use in diagnostic or therapeutic procedures.