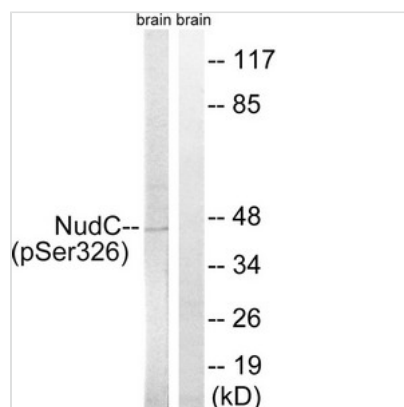




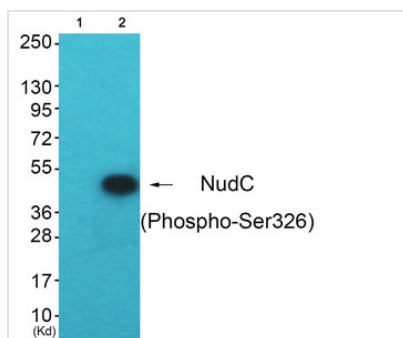
Phospho-NUDC (Ser326) Antibody

Product Code	CSB-PA585147
Storage	Upon receipt, store at -20°C or -80°C. Avoid repeated freeze.
Uniprot No.	Q9Y266
Immunogen	Peptide sequence around phosphorylation site of serine 326 (D-F-S(p)-K-A) derived from Human NudC.
Raised In	Rabbit
Species Reactivity	Human,Mouse,Rat
Specificity	The antibody detects endogenous levels of NudC only when phosphorylated at serine 326.
Tested Applications	ELISA,WB,IHC;WB:1:500-1:1000,IHC:1:50-1:100
Form	Rabbit IgG in phosphate buffered saline (without Mg ²⁺ and Ca ²⁺), pH 7.4, 150mM NaCl, 0.02% sodium azide and 50% glycerol.
Purification Method	Antibodies were produced by immunizing rabbits with synthetic phosphopeptide and KLH conjugates. Antibodies were purified by affinity-chromatography using epitope-specific phosphopeptide. Non-phospho specific antibodies were removed by chromatography
Clonality	Polyclonal
Alias	MNUDC protein; Nuclear distribution gene C (A.nidulans) homolog; SIG-92
Product Type	Polyclonal Antibody
Immunogen Species	Homo sapiens (Human)
Target Names	NUDC

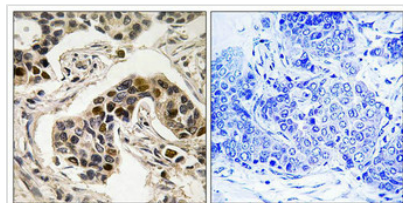
Image



Western blot analysis of extracts from rat brain cells, using NudC (Phospho-Ser326) antibody. The lane on the right is treated with the synthesized peptide.



Western blot analysis of extracts from HepG2 cells (Lane 2), using NudC (Phospho-Ser326) Antibody. The lane on the left is treated with synthesized peptide.



Immunohistochemistry analysis of paraffin-embedded human breast carcinoma tissue using NudC (Phospho-Ser326) antibody. The picture on the right is treated with the synthesized peptide.

Product Modify

Phospho-Ser326