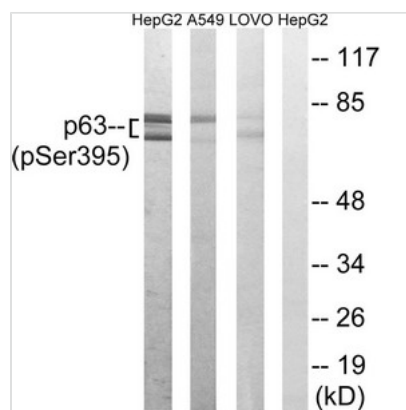




Phospho-TP63 (Ser395) Antibody

Product Code	CSB-PA172231
Storage	Upon receipt, store at -20°C or -80°C. Avoid repeated freeze.
Uniprot No.	Q9H3D4
Immunogen	Peptide sequence around phosphorylation site of serine 395 (R-R-S(p)-P-D) derived from Human p63.
Raised In	Rabbit
Species Reactivity	Human,Mouse,Rat
Specificity	The antibody detects endogenous levels of p63 only when phosphorylated at serine 395.
Tested Applications	ELISA,WB;WB:1:500-1:3000
Form	Rabbit IgG in phosphate buffered saline (without Mg ²⁺ and Ca ²⁺), pH 7.4, 150mM NaCl, 0.02% sodium azide and 50% glycerol.
Purification Method	Antibodies were produced by immunizing rabbits with synthetic phosphopeptide and KLH conjugates. Antibodies were purified by affinity-chromatography using epitope-specific phosphopeptide. Non-phospho specific antibodies were removed by chromatography
Clonality	Polyclonal
Alias	EEC3; KET; LMS; p51; p73H; p73L; SHFM4; TA p63 alpha; TP63; tumor protein p63
Product Type	Polyclonal Antibody
Immunogen Species	Homo sapiens (Human)
Target Names	TP63

Image



Western blot analysis of extracts from HepG2 cells, A549 cells and LOVO cells all treated with nocodazole (1µg/ml, 18hours), using p63 (Phospho-Ser395) antibody. The lane on the right is treated with the synthesized peptide.

Product Modify Phospho-Ser395