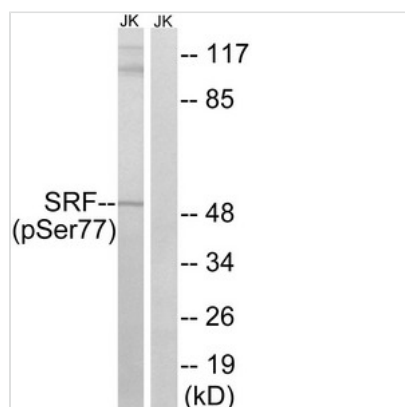




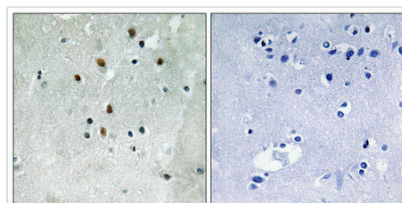
Phospho-SRF (Ser77) Antibody

Product Code	CSB-PA075058
Storage	Upon receipt, store at -20°C or -80°C. Avoid repeated freeze.
Uniprot No.	P11831
Immunogen	Peptide sequence around phosphorylation site of serine 77 (L-Y-S(p)-G-S) derived from Human SRF.
Raised In	Rabbit
Species Reactivity	Human,Mouse
Specificity	The antibody detects endogenous levels of SRF only when phosphorylated at serine 77.
Tested Applications	ELISA,WB,IHC;WB:1:500-1:3000,IHC:1:50-1:100
Form	Rabbit IgG in phosphate buffered saline (without Mg ²⁺ and Ca ²⁺), pH 7.4, 150mM NaCl, 0.02% sodium azide and 50% glycerol.
Purification Method	Antibodies were produced by immunizing rabbits with synthetic phosphopeptide and KLH conjugates. Antibodies were purified by affinity-chromatography using epitope-specific phosphopeptide. Non-phospho specific antibodies were removed by chromatography
Clonality	Polyclonal
Alias	serum response factor
Product Type	Polyclonal Antibody
Immunogen Species	Homo sapiens (Human)
Target Names	SRF

Image



Western blot analysis of extracts from Jurkat cells, treated with PMA (125ng/ml, 30mins), using SRF (Phospho-Ser77) antibody. The lane on the right is treated with the synthesized peptide.



Immunohistochemistry analysis of paraffin-embedded human brain tissue using SRF (Phospho-Ser77) antibody. The picture on the right is treated with the synthesized peptide.



Product Modify**Phospho-Ser77**