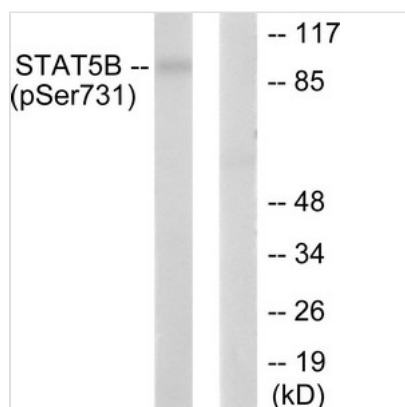




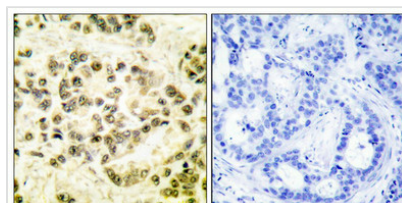
Phospho-STAT5B (Ser731) Antibody

Product Code	CSB-PA220945
Storage	Upon receipt, store at -20°C or -80°C. Avoid repeated freeze.
Uniprot No.	P51692
Immunogen	Peptide sequence around phosphorylation site of serine 731 (A-P-S(p)-P-A) derived from Human STAT5B.
Raised In	Rabbit
Species Reactivity	Human,Mouse,Rat
Specificity	The antibody detects endogenous levels of STAT5B only when phosphorylated at serine 731.
Tested Applications	ELISA,WB,IHC;WB:1:500-1:3000,IHC:1:50-1:100
Form	Rabbit IgG in phosphate buffered saline (without Mg ²⁺ and Ca ²⁺), pH 7.4, 150mM NaCl, 0.02% sodium azide and 50% glycerol.
Purification Method	Antibodies were produced by immunizing rabbits with synthetic phosphopeptide and KLH conjugates. Antibodies were purified by affinity-chromatography using epitope-specific phosphopeptide. Non-phospho specific antibodies were removed by chromatography usi
Clonality	Polyclonal
Alias	Signal transducer and activator of transcription 5B
Product Type	Polyclonal Antibody
Immunogen Species	Homo sapiens (Human)
Target Names	STAT5B

Image



Western blot analysis of extracts from RAW264.7 cells, treated with EGF (200ng/ml, 30mins), using STAT5B (phospho-Ser731) antibody. The lane on the right is treated with the synthesized peptide.



Immunohistochemical analysis of paraffin-embedded human breast carcinoma tissue using STAT5B (phospho-Ser731) antibody. The picture on the right is treated with the synthesized peptide.



Product Modify

Phospho-Ser731

Usage

For Research Use Only. Not for use in diagnostic or therapeutic procedures.