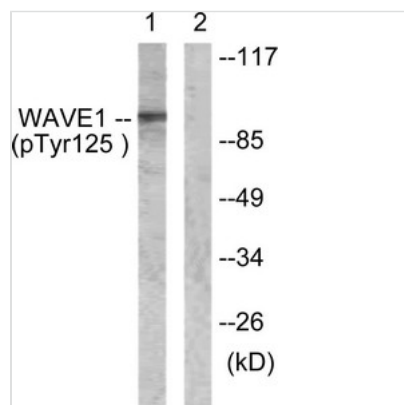




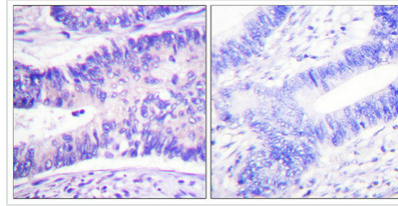
Phospho-WASF1 (Tyr125) Antibody

Product Code	CSB-PA565197
Storage	Upon receipt, store at -20°C or -80°C. Avoid repeated freeze.
Uniprot No.	Q92558
Immunogen	Peptide sequence around phosphorylation site of tyrosine 125 (E-T-Y(p)-D-V) derived from Human WAVE1.
Raised In	Rabbit
Species Reactivity	Human,Mouse
Specificity	The antibody detects endogenous levels of WAVE1 only when phosphorylated at tyrosine 125.
Tested Applications	ELISA,WB,IHC;WB:1:500-1:3000,IHC:1:50-1:100
Form	Rabbit IgG in phosphate buffered saline (without Mg ²⁺ and Ca ²⁺), pH 7.4, 150mM NaCl, 0.02% sodium azide and 50% glycerol.
Purification Method	Antibodies were produced by immunizing rabbits with synthetic phosphopeptide and KLH conjugates. Antibodies were purified by affinity-chromatography using epitope-specific phosphopeptide. Non-phospho specific antibodies were removed by chromatography usi
Clonality	Polyclonal
Alias	KIAA0269; SCAR1; Verprolin homology domain-containing protein 1; WAS1; WASF1; WASP-family protein member 1; Wiskott-Aldrich syndrome protein family member 1
Product Type	Polyclonal Antibody
Immunogen Species	Homo sapiens (Human)
Target Names	WASF1

Image



Western blot analysis of extracts from NIH/3T3 cells, treated with Insulin (0.01U/ml, 15mins), using WAVE1 (Phospho-Tyr125) antibody. The lane on the right is treated with the synthesized peptide.



Immunohistochemistry analysis of paraffin-embedded human colon carcinoma tissue using WAVE1 (Phospho-Tyr125) antibody. The picture on the right is treated with the synthesized peptide.

Product Modify

Phospho-Tyr125

Usage

For Research Use Only. Not for use in diagnostic or therapeutic procedures.