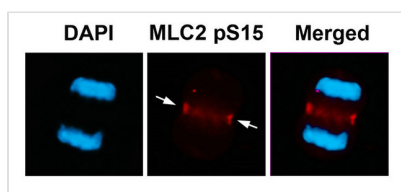




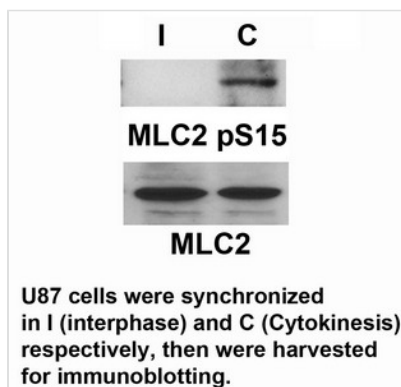
Phospho-MYL9 (Ser15) Antibody

Product Code	CSB-PA098969
Storage	Upon receipt, store at -20°C or -80°C. Avoid repeated freeze.
Uniprot No.	P24844
Immunogen	Peptide sequence around phosphorylation site of serine 15 (A-N-S(p)-N-V) derived from Human MLC2.
Raised In	Rabbit
Species Reactivity	Human
Specificity	The antibody detects endogenous level of MLC2 only when phosphorylated at serine 15.
Tested Applications	ELISA,WB,IF;WB:1:500-1:1000,IF:1:100-1:200
Form	Supplied at 1.0mg/mL in phosphate buffered saline (without Mg ²⁺ and Ca ²⁺), pH 7.4, 150mM NaCl, 0.02% sodium azide and 50% glycerol.
Purification Method	Antibodies were produced by immunizing rabbits with synthetic phosphopeptide and KLH conjugates. Antibodies were purified by affinity-chromatography using epitope-specific phosphopeptide. Non-phospho specific antibodies were removed by chromatography using
Clonality	Polyclonal
Alias	MLC2; MRCL1; MYRL2
Product Type	Polyclonal Antibody
Immunogen Species	Homo sapiens (Human)
Target Names	MYL9

Image



Immunofluorescence staining of methanol-fixed U87 cells using MLC2 (Phospho-Ser15) Antibody.





Product Modify**Phospho-Ser15**