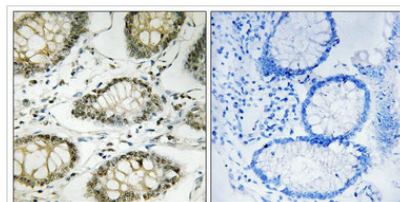




# Phospho-ATR (Ser428) Antibody

<b>Product Code</b>	CSB-PA058282
<b>Storage</b>	Upon receipt, store at -20°C or -80°C. Avoid repeated freeze.
<b>Uniprot No.</b>	Q13535
<b>Immunogen</b>	Peptide sequence around phosphorylation site of serine 428 (G-I-S(p)-P-K) derived from Human ATR.
<b>Raised In</b>	Rabbit
<b>Species Reactivity</b>	Human
<b>Specificity</b>	The antibody detects endogenous levels of ATR only when phosphorylated at serine 428.
<b>Tested Applications</b>	ELISA,IHC;IHC:1:50-1:100
<b>Form</b>	Rabbit IgG in phosphate buffered saline (without Mg <sup>2+</sup> and Ca <sup>2+</sup> ), pH 7.4, 150mM NaCl, 0.02% sodium azide and 50% glycerol.
<b>Purification Method</b>	Antibodies were produced by immunizing rabbits with synthetic phosphopeptide and KLH conjugates. Antibodies were purified by affinity-chromatography using epitope-specific phosphopeptide. Non-phospho specific antibodies were removed by chromatography using
<b>Clonality</b>	Polyclonal
<b>Alias</b>	ataxia telangiectasia and Rad3-related protein; EC 2.7.11.1; FRAP-related protein; FRP1; kinase ATR; protein kinase ATR
<b>Product Type</b>	Polyclonal Antibody
<b>Immunogen Species</b>	Homo sapiens (Human)
<b>Target Names</b>	ATR

## Image



Immunohistochemistry analysis of paraffin-embedded human colon carcinoma tissue using ATR (Phospho-Ser428) antibody. The picture on the right is treated with the synthesized peptide.

**Product Modify** Phospho-Ser428