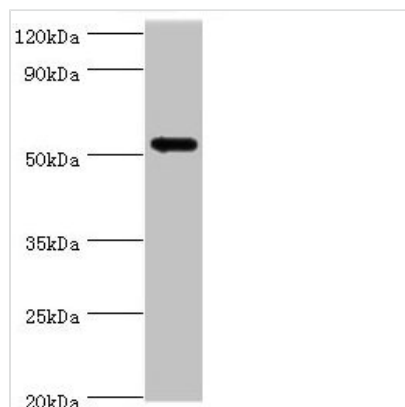




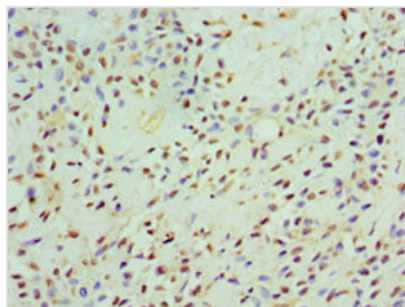
CAMK1G Antibody

| | |
|----------------------------|--|
| Product Code | CSB-PA846679ESR2HU |
| Storage | Upon receipt, store at -20°C or -80°C. Avoid repeated freeze. |
| Uniprot No. | Q96NX5 |
| Immunogen | Recombinant Human Calcium/calmodulin-dependent protein kinase type 1G protein (217-476AA) |
| Raised In | Rabbit |
| Species Reactivity | Human |
| Tested Applications | ELISA, WB, IHC; Recommended dilution: WB:1:500-1:2000, IHC:1:20-1:200 |
| Form | Liquid |
| Conjugate | Non-conjugated |
| Storage Buffer | PBS with 0.02% sodium azide, 50% glycerol, pH7.3. |
| Purification Method | Antigen Affinity Purified |
| Isotype | IgG |
| Clonality | Polyclonal |
| Alias | Calcium/calmodulin-dependent protein kinase type 1G (EC 2.7.11.17) (CaM kinase I gamma) (CaM kinase IG) (CaM-KI gamma) (CaMKI gamma) (CaMKIG) (CaMK-like CREB kinase III) (CLICK III), CAMK1G, CLICK3 VWS1 |
| Immunogen Species | Homo sapiens (Human) |
| Research Area | Signal Transduction |
| Target Names | CAMK1G |

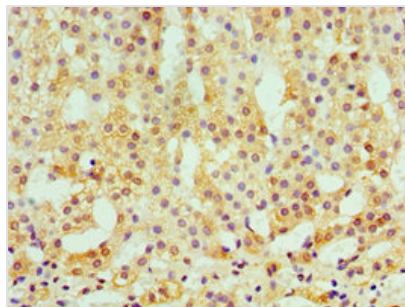
Image



Western blot
 All lanes: CAMK1G antibody at 5µg/ml + HL60 whole cell lysate
 Secondary
 Goat polyclonal to rabbit IgG at 1/10000 dilution
 Predicted band size: 54, 52 kDa
 Observed band size: 54 kDa



Immunohistochemistry of paraffin-embedded human breast cancer using CSB-PA846679ESR2HU at dilution of 1:100



Immunohistochemistry of paraffin-embedded human adrenal gland tissue using CSB-PA846679ESR2HU at dilution of 1:100