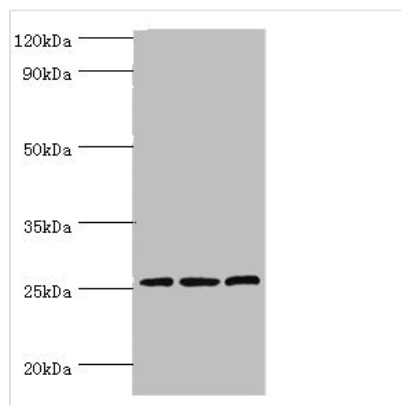




CLDN14 Antibody

Product Code	CSB-PA005494ESR1HU
Storage	Upon receipt, store at -20°C or -80°C. Avoid repeated freeze.
Uniprot No.	O95500
Immunogen	Recombinant Human Claudin-14 protein (140-239AA)
Raised In	Rabbit
Species Reactivity	Human, Mouse, Rat
Tested Applications	ELISA, WB, IHC; Recommended dilution: WB:1:200-1:1000, IHC:1:20-1:200
Form	Liquid
Conjugate	Non-conjugated
Storage Buffer	PBS with 0.02% sodium azide, 50% glycerol, pH7.3.
Purification Method	Antigen Affinity Purified
Isotype	IgG
Clonality	Polyclonal
Alias	Claudin-14, CLDN14
Immunogen Species	Homo sapiens (Human)
Research Area	Signal Transduction
Target Names	CLDN14

Image



Western blot

All lanes: Claudin-14 antibody at 4µg/ml

Lane 1: Rat liver tissue

Lane 2: Mouse kidney tissue

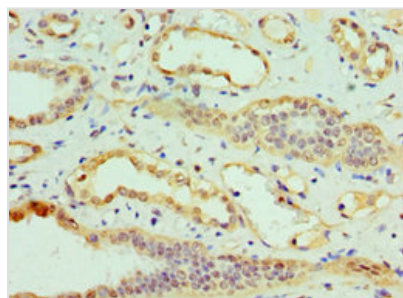
Lane 3: Hela whole cell lysate

Secondary

Goat polyclonal to rabbit IgG at 1/10000 dilution

Predicted band size: 26 kDa

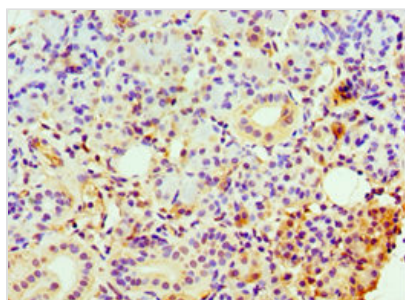
Observed band size: 26 kDa



Immunohistochemistry of paraffin-embedded

human kidney tissue using CSB-

PA005494ESR1HU at dilution of 1:100



Immunohistochemistry of paraffin-embedded human pancreatic tissue using CSB-PA005494ESR1HU at dilution of 1:100

Usage

For Research Use Only. Not for use in diagnostic or therapeutic procedures.