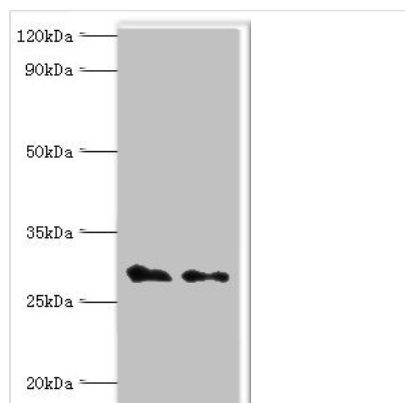




COPS7A Antibody

Product Code	CSB-PA880068ESR1HU
Storage	Upon receipt, store at -20°C or -80°C. Avoid repeated freeze.
Uniprot No.	Q9UBW8
Immunogen	Recombinant Human COP9 signalosome complex subunit 7a protein (1-275AA)
Raised In	Rabbit
Species Reactivity	Human, Rat
Tested Applications	ELISA, WB, IHC; Recommended dilution: WB:1:500-1:2000, IHC:1:20-1:200
Form	Liquid
Conjugate	Non-conjugated
Storage Buffer	PBS with 0.02% sodium azide, 50% glycerol, pH7.3.
Purification Method	Antigen Affinity Purified
Isotype	IgG
Clonality	Polyclonal
Alias	COP9 signalosome complex subunit 7a (SGN7a) (Signalosome subunit 7a) (Dermal papilla-derived protein 10) (JAB1-containing signalosome subunit 7a), COPS7A, CSN7A DERP10
Immunogen Species	Homo sapiens (Human)
Research Area	Cell Biology
Target Names	COPS7A

Image



Western blot

All lanes: COP9 signalosome complex subunit 7a antibody at 4µg/ml

Lane 1: Rat heart tissue

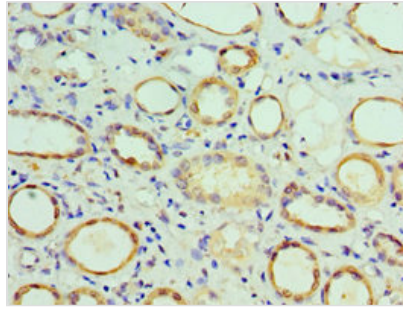
Lane 2: Rat brain tissue

Secondary

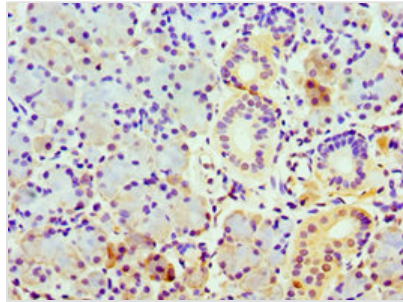
Goat polyclonal to rabbit IgG at 1/10000 dilution

Predicted band size: 30 kDa

Observed band size: 30 kDa



Immunohistochemistry of paraffin-embedded human kidney tissue using CSB-PA880068ESR1HU at dilution of 1:100



Immunohistochemistry of paraffin-embedded human pancreatic tissue using CSB-PA880068ESR1HU at dilution of 1:100

Usage

For Research Use Only. Not for use in diagnostic or therapeutic procedures.