



# CREB3L2 Antibody

<b>Product Code</b>	CSB-PA754617ESR2HU
<b>Storage</b>	Upon receipt, store at -20°C or -80°C. Avoid repeated freeze.
<b>Uniprot No.</b>	Q70SY1
<b>Immunogen</b>	Recombinant Human Cyclic AMP-responsive element-binding protein 3-like protein 2 protein (1-247AA)
<b>Raised In</b>	Rabbit
<b>Species Reactivity</b>	Human, Mouse
<b>Tested Applications</b>	ELISA, WB, IHC, IF; Recommended dilution: WB:1:200-1:1000, IHC:1:20-1:200, IF:1:50-1:200
<b>Form</b>	Liquid
<b>Conjugate</b>	Non-conjugated
<b>Storage Buffer</b>	PBS with 0.02% sodium azide, 50% glycerol, pH7.3.
<b>Purification Method</b>	Antigen Affinity Purified
<b>Isotype</b>	IgG
<b>Clonality</b>	Polyclonal
<b>Alias</b>	Cyclic AMP-responsive element-binding protein 3-like protein 2 (cAMP-responsive element-binding protein 3-like protein 2) (BBF2 human homolog on chromosome 7) [Cleaved into: Processed cyclic AMP-responsive element-binding protein 3-like protein 2], CREB3L2, BBF2H7
<b>Immunogen Species</b>	Homo sapiens (Human)
<b>Research Area</b>	Epigenetics and Nuclear Signaling
<b>Target Names</b>	CREB3L2

## Image



### Western blot

All lanes: CREB3L2 antibody at 6µg/ml

Lane 1: Mouse liver tissue

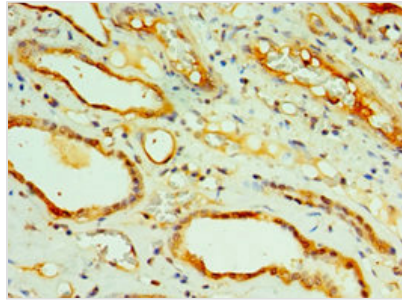
Lane 2: Mouse lung tissue

Secondary

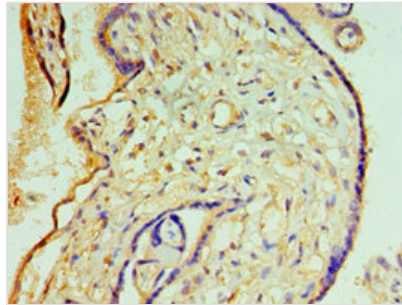
Goat polyclonal to rabbit IgG at 1/10000 dilution

Predicted band size: 58, 51, 28 kDa

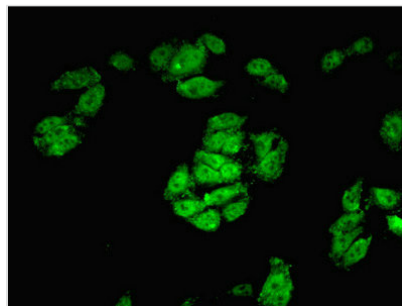
Observed band size: 58 kDa



Immunohistochemistry of paraffin-embedded human kidney tissue using CSB-PA754617ESR2HU at dilution of 1:100



Immunohistochemistry of paraffin-embedded human placenta tissue using CSB-PA754617ESR2HU at dilution of 1:100



Immunofluorescent analysis of HepG2 cells using CSB-PA754617ESR2HU at dilution of 1:100 and Alexa Fluor 488-conjugated AffiniPure Goat Anti-Rabbit IgG(H+L)