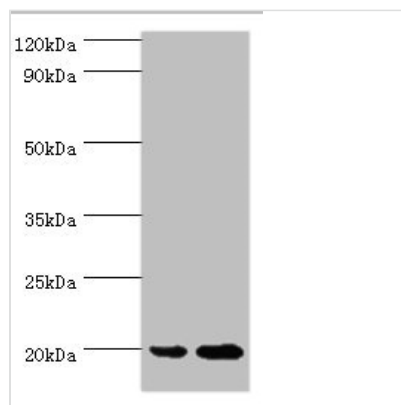




ARF6 Antibody

Product Code	CSB-PA001996ESR1HU
Storage	Upon receipt, store at -20°C or -80°C. Avoid repeated freeze.
Uniprot No.	P62330
Immunogen	Recombinant Human ADP-ribosylation factor 6 protein (1-175AA)
Raised In	Rabbit
Species Reactivity	Human
Tested Applications	ELISA, WB, IHC; Recommended dilution: WB:1:500-1:2000, IHC:1:20-1:200
Form	Liquid
Conjugate	Non-conjugated
Storage Buffer	PBS with 0.02% sodium azide, 50% glycerol, pH7.3.
Purification Method	Antigen Affinity Purified
Isotype	IgG
Clonality	Polyclonal
Alias	ADP-ribosylation factor 6, ARF6
Immunogen Species	Homo sapiens (Human)
Research Area	Signal Transduction
Target Names	ARF6

Image



Western blot

All lanes: ARF6 antibody at 2µg/ml

Lane 1: 293T whole cell lysate

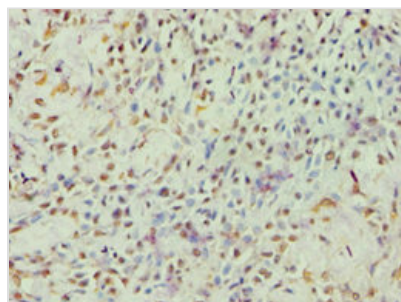
Lane 2: HepG2 whole cell lysate

Secondary

Goat polyclonal to rabbit IgG at 1/10000 dilution

Predicted band size: 20 kDa

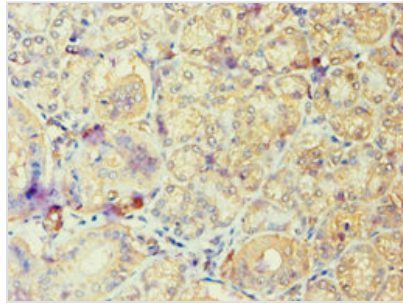
Observed band size: 20 kDa



Immunohistochemistry of paraffin-embedded

human breast cancer using CSB-

PA001996ESR1HU at dilution of 1:100



Immunohistochemistry of paraffin-embedded human pancreatic tissue using CSB-PA001996ESR1HU at dilution of 1:100

Usage

For Research Use Only. Not for use in diagnostic or therapeutic procedures.