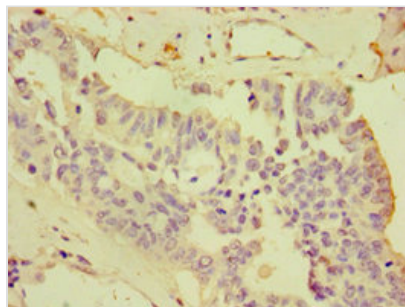




CDCP1 Antibody

Product Code	CSB-PA884474ESR2HU
Storage	Upon receipt, store at -20°C or -80°C. Avoid repeated freeze.
Uniprot No.	Q9H5V8
Immunogen	Recombinant Human CUB domain-containing protein 1 protein (523-836AA)
Raised In	Rabbit
Species Reactivity	Human
Tested Applications	ELISA, IHC; Recommended dilution: IHC:1:20-1:200
Form	Liquid
Conjugate	Non-conjugated
Storage Buffer	PBS with 0.02% sodium azide, 50% glycerol, pH7.3.
Purification Method	Antigen Affinity Purified
Isotype	IgG
Clonality	Polyclonal
Alias	CUB domain-containing protein 1 (Membrane glycoprotein gp140) (Subtractive immunization M plus HEP3-associated 135 kDa protein) (SIMA135) (Transmembrane and associated with src kinases) (CD antigen CD318), CDCP1, TRASK
Immunogen Species	Homo sapiens (Human)
Research Area	Tags & Cell Markers
Target Names	CDCP1

Image



Immunohistochemistry of paraffin-embedded human endometrial cancer using CSB-PA884474ESR2HU at dilution of 1:100

Usage

For Research Use Only. Not for use in diagnostic or therapeutic procedures.