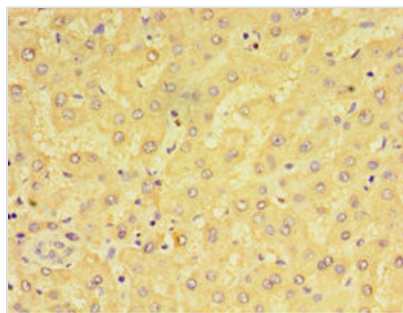




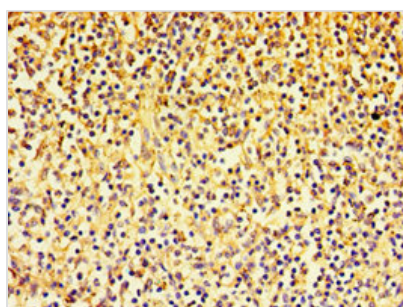
ADGRE1 Antibody

Product Code	CSB-PA613493ESR2HU
Storage	Upon receipt, store at -20°C or -80°C. Avoid repeated freeze.
Uniprot No.	Q14246
Immunogen	Recombinant Human Adhesion G protein-coupled receptor E1 protein (21-290AA)
Raised In	Rabbit
Species Reactivity	Human
Tested Applications	ELISA, IHC; Recommended dilution: IHC:1:20-1:200
Form	Liquid
Conjugate	Non-conjugated
Storage Buffer	PBS with 0.02% sodium azide, 50% glycerol, pH7.3.
Purification Method	Antigen Affinity Purified
Isotype	IgG
Clonality	Polyclonal
Alias	Adhesion G protein-coupled receptor E1 (EGF-like module receptor 1) (EGF-like module-containing mucin-like hormone receptor-like 1) (EMR1 hormone receptor), ADGRE1, EMR1 TM7LN3
Immunogen Species	Homo sapiens (Human)
Research Area	Immunology
Target Names	ADGRE1

Image



Immunohistochemistry of paraffin-embedded human liver tissue using CSB-PA613493ESR2HU at dilution of 1:100



Immunohistochemistry of paraffin-embedded human spleen tissue using CSB-PA613493ESR2HU at dilution of 1:100



Usage

For Research Use Only. Not for use in diagnostic or therapeutic procedures.