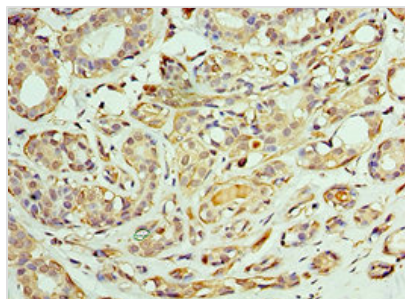




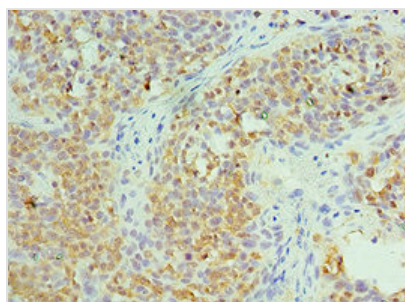
# CCT6A Antibody

<b>Product Code</b>	CSB-PA004865ESR1HU
<b>Storage</b>	Upon receipt, store at -20°C or -80°C. Avoid repeated freeze.
<b>Uniprot No.</b>	P40227
<b>Immunogen</b>	Recombinant Human T-complex protein 1 subunit zeta protein (80-250AA)
<b>Raised In</b>	Rabbit
<b>Species Reactivity</b>	Human
<b>Tested Applications</b>	ELISA, IHC, IP; Recommended dilution: IHC:1:20-1:200, IP:1:200-1:2000
<b>Form</b>	Liquid
<b>Conjugate</b>	Non-conjugated
<b>Storage Buffer</b>	PBS with 0.02% sodium azide, 50% glycerol, pH7.3.
<b>Purification Method</b>	Antigen Affinity Purified
<b>Isotype</b>	IgG
<b>Clonality</b>	Polyclonal
<b>Alias</b>	T-complex protein 1 subunit zeta (TCP-1-zeta) (Acute morphine dependence-related protein 2) (CCT-zeta-1) (HTR3) (Tcp20), CCT6A, CCT6 CCTZ
<b>Immunogen Species</b>	Homo sapiens (Human)
<b>Research Area</b>	Signal Transduction
<b>Target Names</b>	CCT6A

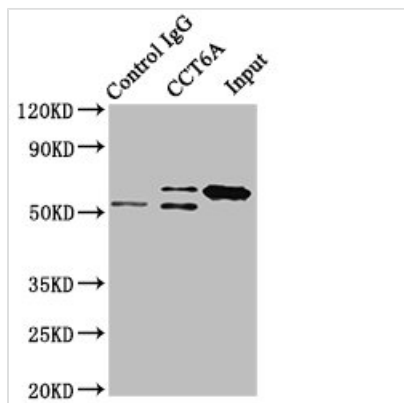
## Image



Immunohistochemistry of paraffin-embedded human breast cancer using CSB-PA004865ESR1HU at dilution of 1:100



Immunohistochemistry of paraffin-embedded human tonsil tissue using CSB-PA004865ESR1HU at dilution of 1:100



Immunoprecipitating CCT6A in HeLa whole cell lysate

Lane 1: Rabbit control IgG instead of CSB-PA004865ESR1HU in HeLa whole cell lysate. For western blotting, a HRP-conjugated Protein G antibody was used as the secondary antibody (1/2000)

Lane 2: CSB-PA004865ESR1HU (8 $\mu$ g) + HeLa whole cell lysate (500 $\mu$ g)

Lane 3: HeLa whole cell lysate (10 $\mu$ g)

## Usage

For Research Use Only. Not for use in diagnostic or therapeutic procedures.