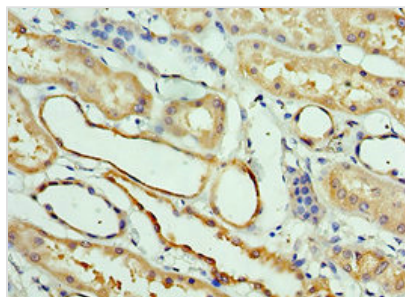




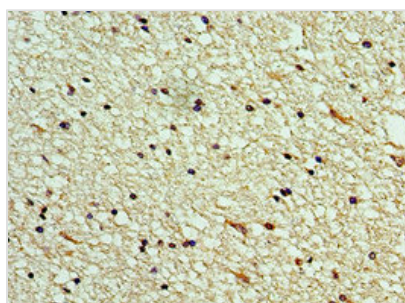
CLEC11A Antibody

Product Code	CSB-PA896480ESR2HU
Storage	Upon receipt, store at -20°C or -80°C. Avoid repeated freeze.
Uniprot No.	Q9Y240
Immunogen	Recombinant Human C-type lectin domain family 11 member A protein (22-323AA)
Raised In	Rabbit
Species Reactivity	Human
Tested Applications	ELISA, IHC, IF; Recommended dilution: IHC:1:20-1:200, IF:1:50-1:200
Form	Liquid
Conjugate	Non-conjugated
Storage Buffer	PBS with 0.02% sodium azide, 50% glycerol, pH7.3.
Purification Method	Antigen Affinity Purified
Isotype	IgG
Clonality	Polyclonal
Alias	C-type lectin domain family 11 member A (C-type lectin superfamily member 3) (Lymphocyte secreted C-type lectin) (Osteolectin) (Stem cell growth factor) (p47), CLEC11A, CLECSF3 LSLCL SCGF
Immunogen Species	Homo sapiens (Human)
Research Area	Immunology
Target Names	CLEC11A

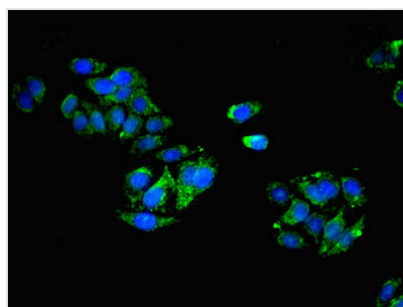
Image



Immunohistochemistry of paraffin-embedded human kidney tissue using CSB-PA896480ESR2HU at dilution of 1:100



Immunohistochemistry of paraffin-embedded human brain tissue using CSB-PA896480ESR2HU at dilution of 1:100



Immunofluorescent analysis of HepG2 cells using CSB-PA896480ESR2HU at dilution of 1:100 and Alexa Fluor 488-conjugated AffiniPure Goat Anti-Rabbit IgG(H+L)

Usage

For Research Use Only. Not for use in diagnostic or therapeutic procedures.