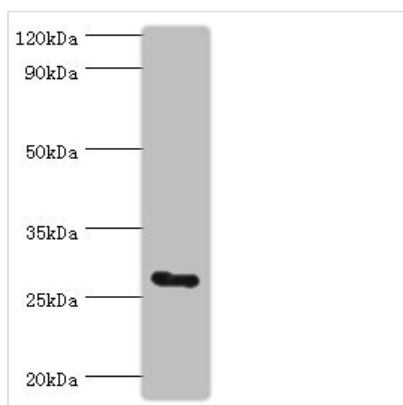




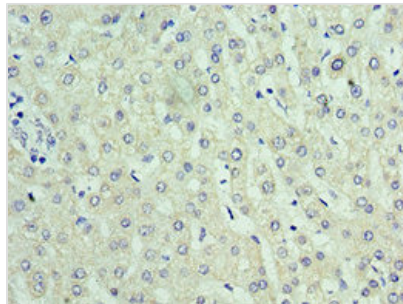
RTRAF Antibody

Product Code	CSB-PA896684ESR1HU
Storage	Upon receipt, store at -20°C or -80°C. Avoid repeated freeze.
Uniprot No.	Q9Y224
Immunogen	Recombinant Human RNA transcription, translation and transport factor protein (1-244AA)
Raised In	Rabbit
Species Reactivity	Human, Mouse
Tested Applications	ELISA, WB, IHC; Recommended dilution: WB:1:500-1:2000, IHC:1:20-1:200
Form	Liquid
Conjugate	Non-conjugated
Storage Buffer	PBS with 0.02% sodium azide, 50% glycerol, pH7.3.
Purification Method	Antigen Affinity Purified
Isotype	IgG
Clonality	Polyclonal
Alias	RNA transcription, translation and transport factor protein (CLE7 homolog) (CLE) (hCLE), RTRAF, C14orf166
Immunogen Species	Homo sapiens (Human)
Research Area	Neuroscience
Target Names	RTRAF

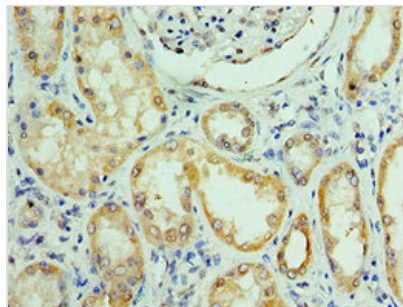
Image



Western blot
 All lanes: C14orf166 antibody at 6µg/ml + Mouse lung tissue
 Secondary
 Goat polyclonal to rabbit IgG at 1/10000 dilution
 Predicted band size: 28 kDa
 Observed band size: 28 kDa



Immunohistochemistry of paraffin-embedded human liver tissue using CSB-PA896684ESR1HU at dilution of 1:100



Immunohistochemistry of paraffin-embedded human kidney tissue using CSB-PA896684ESR1HU at dilution of 1:100